

WORLD CITY

ustradenumbers.com



2023

L.A.-LONG BEACH

TRADE NUMBERS

San Pedro Bay's \$433 billion in two-way trade with the world



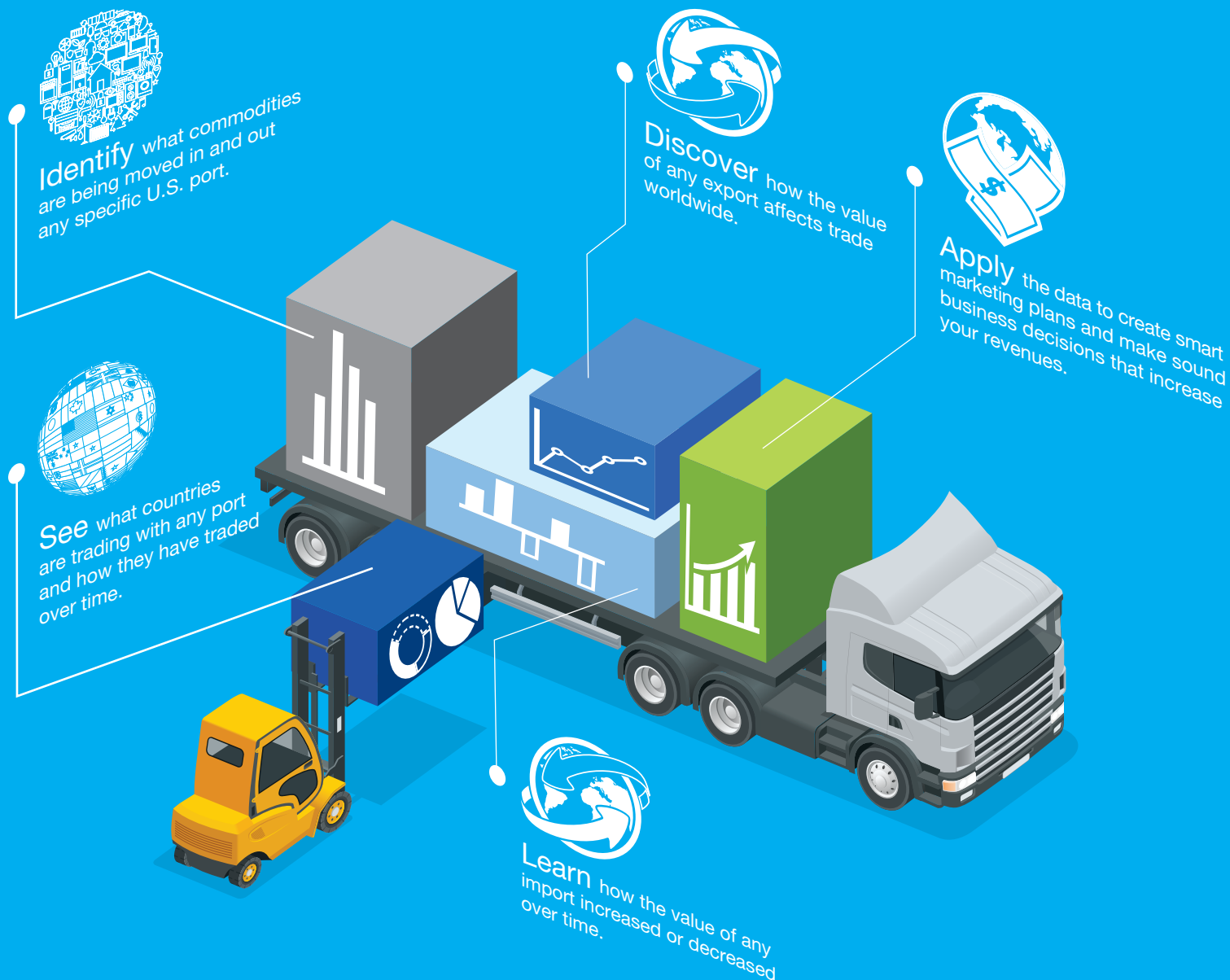
Sponsored
by:



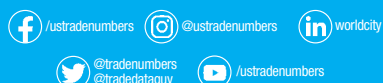
Make sense. Make dollars.

Get a ustradenumbers.com subscription. Make sense of U.S. trade data. Discover insights to drive your business forward.

The ultimate trade tool is at your fingertips – USTradeNumbers.com. Get monthly updates to more than 450 ports at ustradenumbers.com. Upgrade to a higher level subscription to dig deeper, to better understand competitive markets and historical trends. It's not a lot of dollars. But it makes a lot of sense.



For more information:
305.441.2244
info@ustradenumbers.com



Get access today ▼

USTRADENUMBERS.com

an on-line, trade tool from: **WORLD CITY**

A \$433 billion year

Los Angeles, Long Beach set another record

President's Note

Ken Roberts



For the second consecutive year, trade through the San Pedro Bay ports of Los Angeles and Long Beach set a record, ending the year a smidgen above \$433 billion.

Imports set a record for the third consecutive year, at \$374.93 billion, while exports ended the year at \$58.07 billion. That remains below the \$80.41 billion record set in 2004.

It is, of course, imports for which the San Pedro Bay ports are known, particularly Asian imports. The two seaports did more total trade with a host of Asian countries than any other U.S. airport, seaport or border crossing in 2022, as is customary. Here are a few examples:

- China (26 percent by value, 21.5 percent by tonnage)
- Japan (19.7 percent by value, 12.4 percent by tonnage and second to Port of Houston by tonnage)
- Vietnam (31.3 percent by value, 33 percent by tonnage)
- Taiwan (18.4 percent by value, 19.6 percent by tonnage and second to Port of Corpus Christi)
- South Korea (15.1 percent by value, 13.5 percent by tonnage)

- Thailand, (24.5 percent by value, 25 percent by tonnage)
- Indonesia (25.6 percent by value, 16.4 percent by tonnage)
- Cambodia (42.5 percent by value, 41.1 percent by tonnage)

Looking at total U.S. imports in 2022, the two ports accounted for 11.5 percent of the total value, 15 percent by tonnage. Both measures put them atop all other ports.

On the export side, the two ports accounted for 2.8 percent of the nation's total by value and 3.8 percent by tonnage.

These tonnage figures come with an asterisk, however. The Census Bureau, which gets the statistics it releases to the public from Customs and Border Protection, does not provide much tonnage data for the nation's border crossings, which has the effect of inflating the percentages for airports and seaports.

A second issue is the reason that, for the second year, we have chosen to combine the data involving the Port of Los Angeles and the Port of Long Beach.

The data that the Census Bureau releases to the public suggests that Los

Angeles imports are valued at more than three times those of Long Beach. That's \$283.36 billion and \$91.57 billion, respectively. That's a difference of almost \$192 billion. The export data is much closer to being equal, little more than \$1 billion separating the neighboring seaports.

While we combine the totals for the two seaports on the two-page U.S. map on pages 6-7, we left them separate, as reported by Census, so you can see the difference, in the list on page 13 of the nation's top 50 airports, seaports and border crossings. Here, the Port of Los Angeles ranks second and the Port of Long Beach ranks 12th.

Oddly, the difference in import tonnage between the two seaports is far smaller. The Port of Los Angeles tonnage reported was slightly less than 40 percent greater than Long Beach in 2022

In the end, none of this detracts from the incredible job done by the San Pedro Bay's trade community, which plays such a critical role in the nation's well-being. Those who didn't understand that prior to Covid-19 certainly do now.

@TradeDataGuy

our products

WorldCity has been producing TradeNumbers publications since 2001 for airports, seaports and border crossings across the United States. They are published annually in three formats: the Executive Summary format, a full 64-page magazine format, and a handy pocket-sized version. WorldCity also hosts a website, ustradenumbers.com, updated monthly with pages of data for more than 200 countries, more than 1,800 specific export and import commodities, and more than 450 airports, seaports and border crossings. WorldCity syndicates its content to airports, seaports and border crossings, updated monthly including the Port of Los Angeles and Los Angeles International Airport. Data for those ports is also "unlocked" and available to all at ustradenumbers.com.

our people

PRESIDENT: Ken Roberts

MANAGEMENT STAFF: Tatiana Panzardi

DATA & WEBSITE DEVELOPMENT: George Avelino

VIDEO PRODUCTION: Hiram Henriquez and Kristian Rodriguez

GRAPHIC DESIGN: Vivian Chavez, Eric Borrazas, Suzette Sullivan, Hiram Henriquez

there's more

DOWNLOAD versions of our publications, including this one, at ustradenumbers.com.

SUBSCRIBE for up to 10 years of data for any export, import, country, airport, seaport or border crossing with a subscription to ustradenumbers.com.

ACCESS sponsored pages, which are open to all, including the pages for Port of Los Angeles, Los Angeles International Airport, Miami International Airport, Port Laredo, Del Rio, Pharr, Eagle Pass, Houston Intercontinental Airport, Port Hueneme, Port Everglades and Mexico. For more information about the Content Syndication program, contact info@worldcityweb.com.

WORLD CITY

www.ustradenumbers.com



/ustradenumbers



@ustradenumbers



worldcity



@tradenumbers
@tradedataguy



/ustradenumbers

TOP 25 COUNTRIES

95.61% OF ALL TRADE

KEY

▲ Ranking increased 2021 to 2022

▼ Ranking decreased 2021 to 2022

Rank
change

0	01.	China
0	02.	Vietnam
0	03.	Japan
1	▲ 04.	South Korea
-1	▼ 05.	Taiwan
0	06.	Thailand
0	07.	Indonesia
0	08.	Malaysia
1	▲ 09.	Philippines
1	▲ 10.	Cambodia
1	▲ 11.	India
-3	▼ 12.	Australia
2	▲ 13.	Brazil
0	14.	Ecuador
-2	▼ 15.	Germany
6	▲ 16.	Iraq
4	▲ 17.	Mexico
1	▲ 18.	Saudi Arabia
-3	▼ 19.	Singapore
-3	▼ 20.	Colombia
-3	▼ 21.	Bangladesh
-2	▼ 22.	Hong Kong
0	23.	Italy
0	24.	Guyana
2	▲ 25.	Chile

CHART OF TOP 50 TRADE PARTNERS, MORE DETAILS,

PAGE

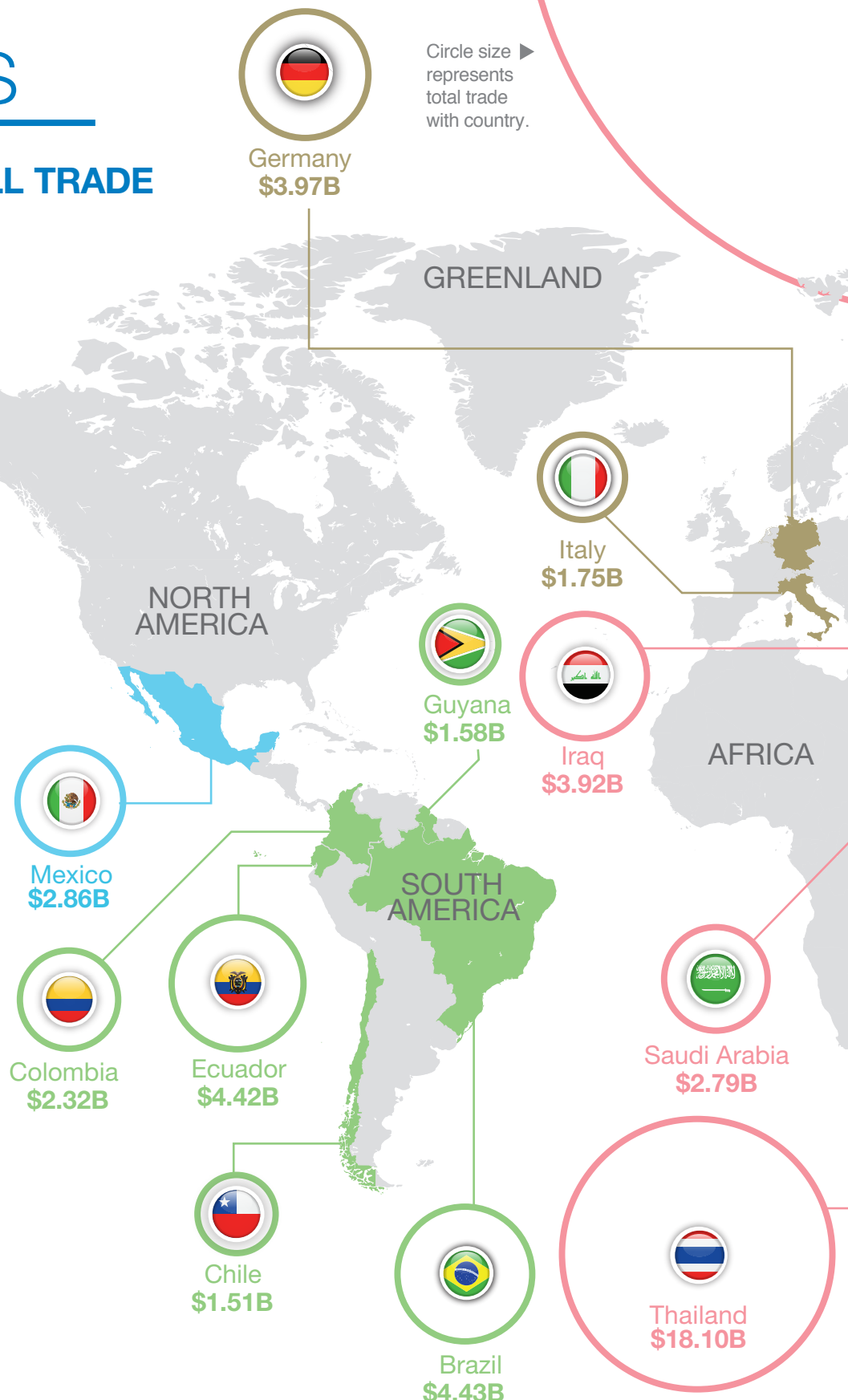
12



TRADE GAIN: Trade grew the most with Japan (\$3.50 billion) and South Korea (\$2.63 billion).



TRADE LOSS: Trade fell the most with Russia (\$589.63 million) and Australia (\$402.19 million).



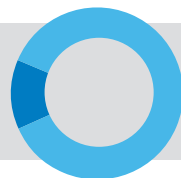
TOTAL TRADE
IN BILLIONS
\$433.00
4.21% ▲

EXPORTS
IN BILLIONS
\$58.07
5.05% ▲

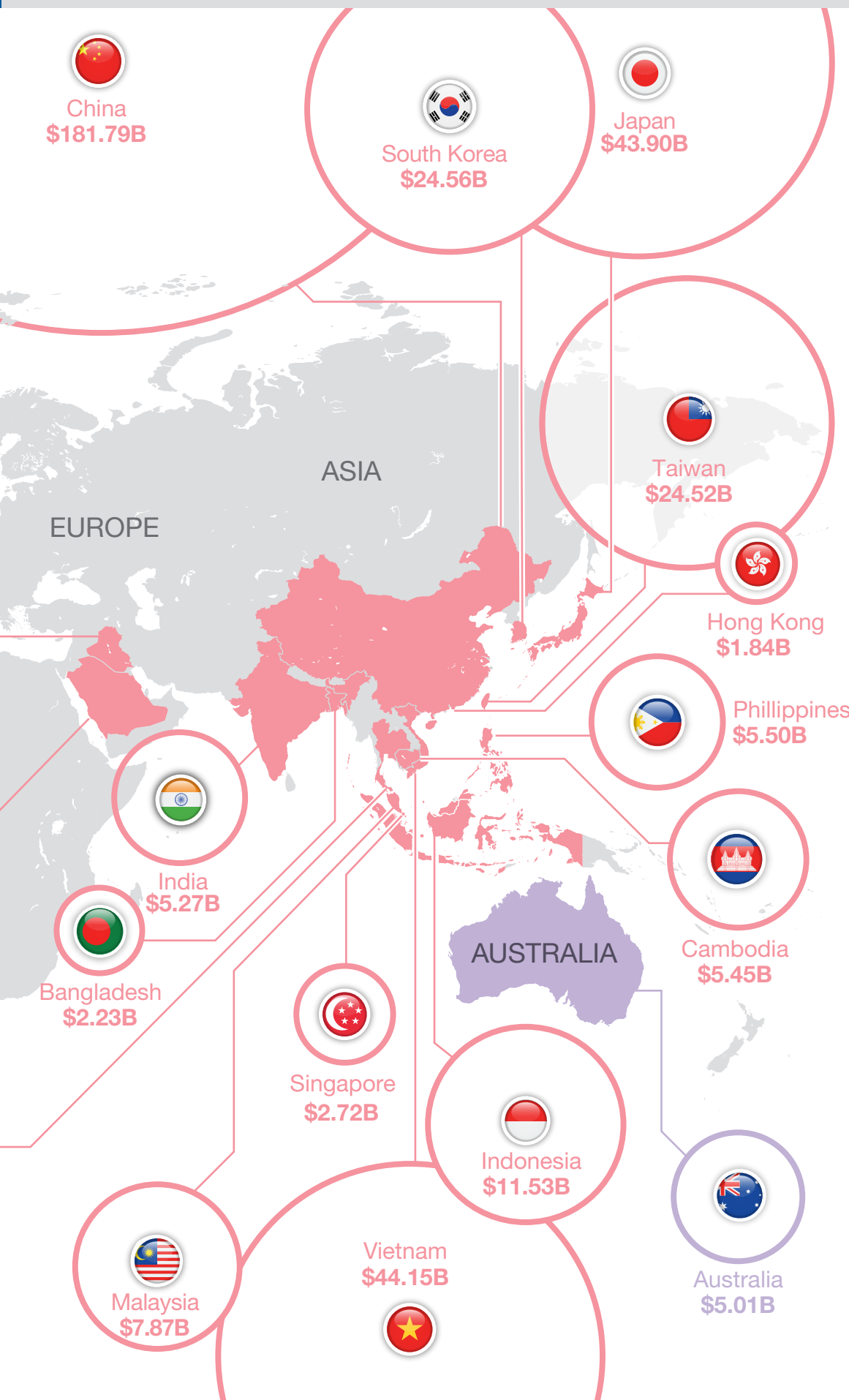
IMPORTS
IN BILLIONS
\$374.93
4.08% ▲

DEFICIT
IN BILLIONS
(\$316.85)

TRADE BALANCE
13%
EXPORTS



87%
IMPORTS



TOP 25 EXPORT PARTNERS

93.99% OF ALL EXPORTS

0	01. China
0	02. Japan
0	03. South Korea
0	04. Australia
0	05. Taiwan
0	06. Vietnam
3 ▲	07. Indonesia
0	08. Malaysia
0	09. Thailand
-3 ▼	10. Hong Kong
0	11. Philippines
0	12. India
0	13. Singapore
8 ▲	14. Chile
0	15. Netherlands
-2 ▼	16. Germany
-1 ▼	17. Belgium
1 ▲	18. United Arab Emirates
-2 ▼	19. New Zealand
3 ▲	20. Mexico
-3 ▼	21. United Kingdom
-1 ▼	22. Peru
-3 ▼	23. Saudi Arabia
0	24. Bangladesh
1 ▲	25. Pakistan

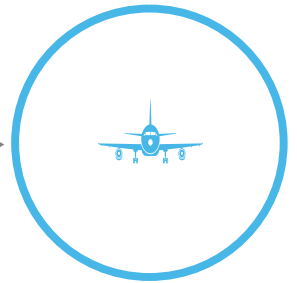
TOP 25 IMPORT PARTNERS

96.59% OF ALL IMPORTS

0	01. China
0	02. Vietnam
0	03. Japan
0	04. Taiwan
0	05. South Korea
0	06. Thailand
0	07. Indonesia
0	08. Malaysia
0	09. Cambodia
2 ▲	10. Ecuador
3 ▲	11. Brazil
-2 ▼	12. Philippines
-2 ▼	13. India
4 ▲	14. Iraq
-2 ▼	15. Germany
1 ▲	16. Saudi Arabia
2 ▲	17. Mexico
-3 ▼	18. Colombia
-3 ▼	19. Bangladesh
0	20. Singapore
0	21. Italy
0	22. Guyana
0	23. Australia
2 ▲	24. Canada
-1 ▼	25. Chile

TOP 20
PORTS61.98%
OF ALL U.S. TRADE

KEY

Circle size
represents
total trade.O'Hare Int'l Airport
\$329.92B

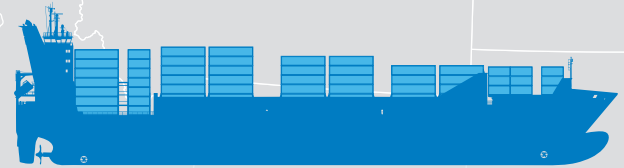
KEY

▲ Ranking increased 2021 to 2022

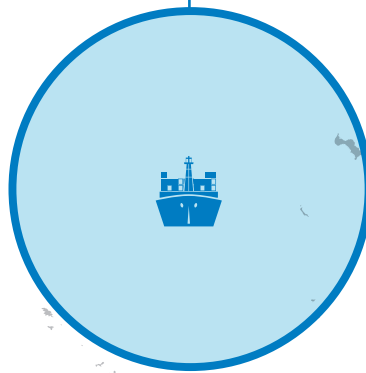
▼ Ranking decreased 2021 to 2022

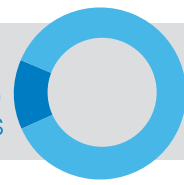
Rank
change

- | | |
|------|----------------------------------|
| 0 | 01. O'Hare Int'l Airport |
| 0 | 02. Port of Los Angeles |
| 0 | 03. Port Laredo |
| 1 ▲ | 04. Port of Newark |
| -1 ▼ | 05. JFK International Airport |
| 0 | 06. Port of Houston |
| 1 ▲ | 07. Port of New Orleans |
| -1 ▼ | 08. Detroit Ambassador Bridge |
| 0 | 09. Los Angeles Int'l Airport |
| 0 | 10. Port of Savannah |
| 0 | 11. Port Huron Blue Water Bridge |
| 0 | 12. Port of Long Beach |
| 0 | 13. Port of Virginia |
| 0 | 14. Port of Charleston |
| 0 | 15. Buffalo Peace Bridge |
| 9 ▲ | 16. Port of Corpus Christi |
| -1 ▼ | 17. Cleveland Int'l Airport |
| -1 ▼ | 18. Anchorage Int'l Airport |
| 2 ▲ | 19. Ysleta-Zaragoza Bridge |
| 4 ▲ | 20. Port of Baltimore |

San Pedro Bay represents
8.16% of all U.S. Trade*

*The Port of Los Angeles and Port of Long Beach are combined on the map to more accurately reflect the trade that occurs at the two seaports. U.S. Census Bureau data undercounts Long Beach imports, crediting those to the Port of Los Angeles.

CHART OF
TOP 50 PORTS,
MORE DETAILS,
PAGE
13Los Angeles
Int'l Airport
\$153.13BPort of Los Angeles
Port of Long Beach
\$433.00BAnchorage
Int'l Airport
\$77.87BYsleta-
Zaragoza
Bridge
\$77.15BPort Laredo
\$299.45B

TOTAL TRADE
IN BILLIONS
\$433.00
4.21% ▲EXPORTS
IN BILLIONS
\$58.07
5.05% ▲IMPORTS
IN BILLIONS
\$374.93
4.08% ▲DEFICIT
IN BILLIONS
(\$316.85)TRADE BALANCE
13%
EXPORTS**87%**
IMPORTSDetroit
Ambassador
Bridge
\$158.21BPort Huron
Blue Water Bridge
\$126.99BCleveland
Int'l Airport
\$93.96BBuffalo Peace
Bridge
\$95.36BJFK Int'l Airport
\$258.05B

TOP 20 PORTS FOR EXPORTS

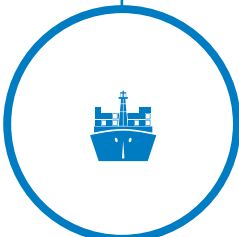
60.98% OF ALL U.S.
EXPORTSRank
change

- 2 ▲ 01. Port of Houston
- 1 ▼ 02. JFK International Airport
- 1 ▼ 03. Port Laredo
- 0 04. Port of New Orleans
- 4 ▲ 05. Port of Corpus Christi
- 1 ▼ 06. Detroit Ambassador Bridge
- 1 ▼ 07. Low-Value Exports
- 1 ▼ 08. O'Hare Int'l Airport
- 1 ▼ 09. Los Angeles Int'l Airport
- 0 10. Port Huron Blue Water Bridge
- 0 11. Cleveland Int'l Airport
- 0 12. Buffalo Peace Bridge
- 0 13. Miami Int'l Airport
- 0 14. San Francisco Int'l Airport
- 1 ▲ 15. Port of Virginia
- 1 ▲ 16. Port of Savannah
- 2 ▼ 17. Port of New York
- 2 ▲ 18. **Port of Long Beach**
- 1 ▼ 19. Port of Charleston
- 1 ▼ 20. **Port of Los Angeles**

TOP 20 PORTS FOR IMPORTS

66.54% OF ALL U.S.
IMPORTSRank
change

- 0 01. **Port of Los Angeles**
- 0 02. O'Hare Int'l Airport
- 0 03. Port of Newark
- 0 04. Port Laredo
- 0 05. JFK International Airport
- 0 06. Port of Savannah
- 2 ▲ 07. Port of Houston
- 1 ▼ 08. Los Angeles Int'l Airport
- 1 ▼ 09. **Port of Long Beach**
- 0 10. Detroit Ambassador Bridge
- 2 ▲ 11. Port of Virginia
- 2 ▲ 12. Port of Charleston
- 1 ▼ 13. Port Huron Blue Water Bridge
- 3 ▼ 14. Port of New Orleans
- 1 ▲ 15. Port of Baltimore
- 1 ▼ 16. Anchorage Int'l Airport
- 0 17. Ysleta-Zaragoza Bridge
- 1 ▲ 18. Buffalo Peace Bridge
- 1 ▲ 19. Cleveland Int'l Airport
- 1 ▲ 20. Otay Mesa Border Crossing

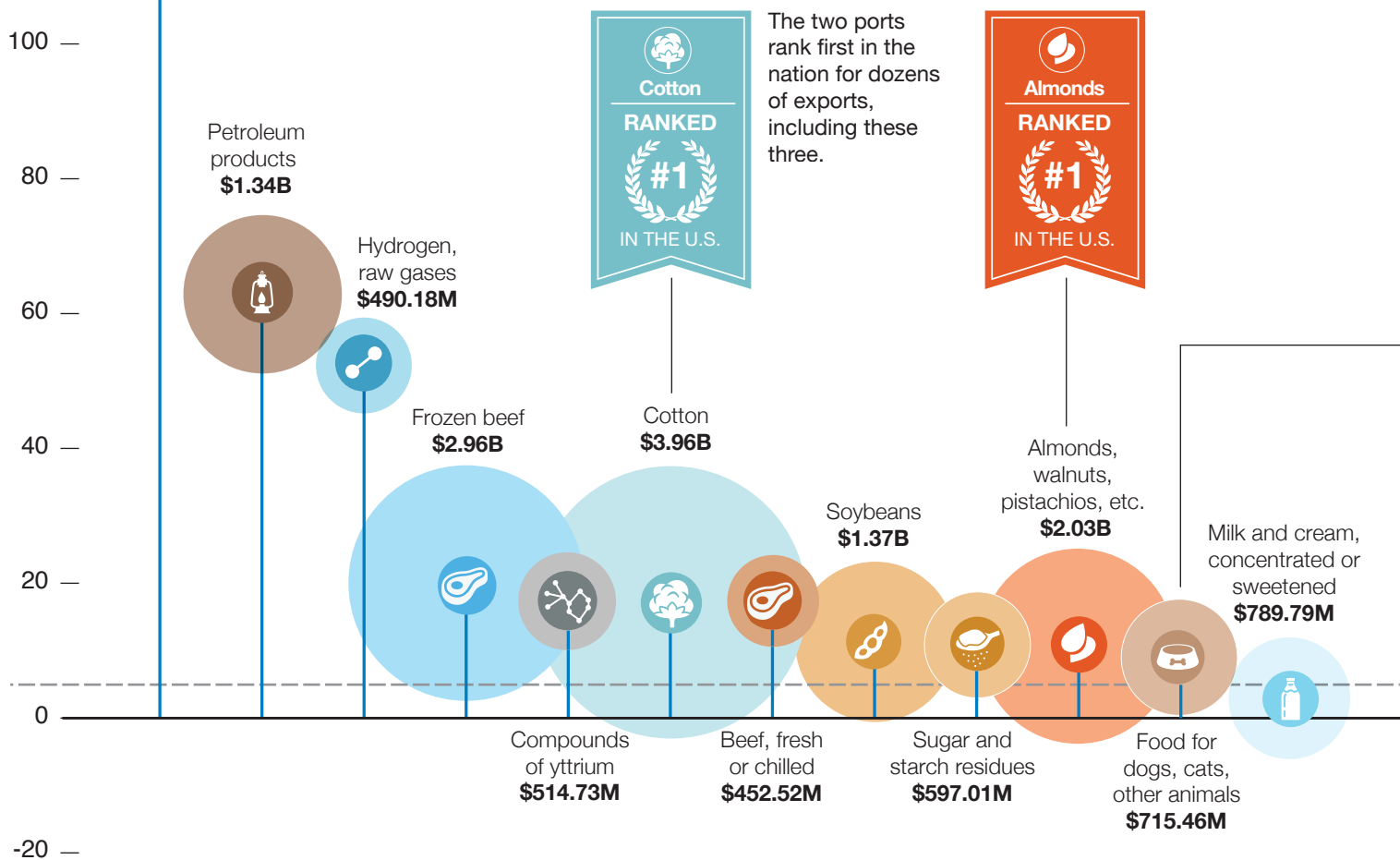
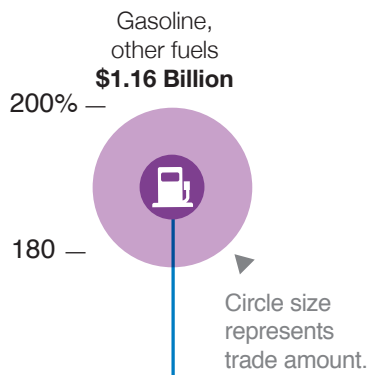
Port of Newark
\$259.50BPort of Virginia
\$106.88BPort of Baltimore
\$74.38BPort of
Corpus Christi
\$94.41BPort of
Houston
\$241.43BPort of
New Orleans
\$163.43BPort of
Savannah
\$147.97BPort of
Charleston
\$99.44B

2022 SAN PEDRO BAY'S TOP 25 EXPORTS

THE PACE OF CHANGE

FIFTEEN OF TOP 25 EXPORTS INCREASED, 10 DECREASED

This data visualization shows the growth rate of the top 25 exports in 2022 when compared to 2021. The top 25 exports are shown from the fastest-growing on the left to the slowest-growing on the right. Fifteen of the top 25 grew in value, while the 10 on the far right declined.



13% PERCENTAGE OF PORT OF LOS ANGELES AND PORT OF LONG BEACH TRADE THAT WAS AN EXPORT

TOTAL EXPORTS \$58.07 BILLION

1-YEAR CHANGE
5.05%

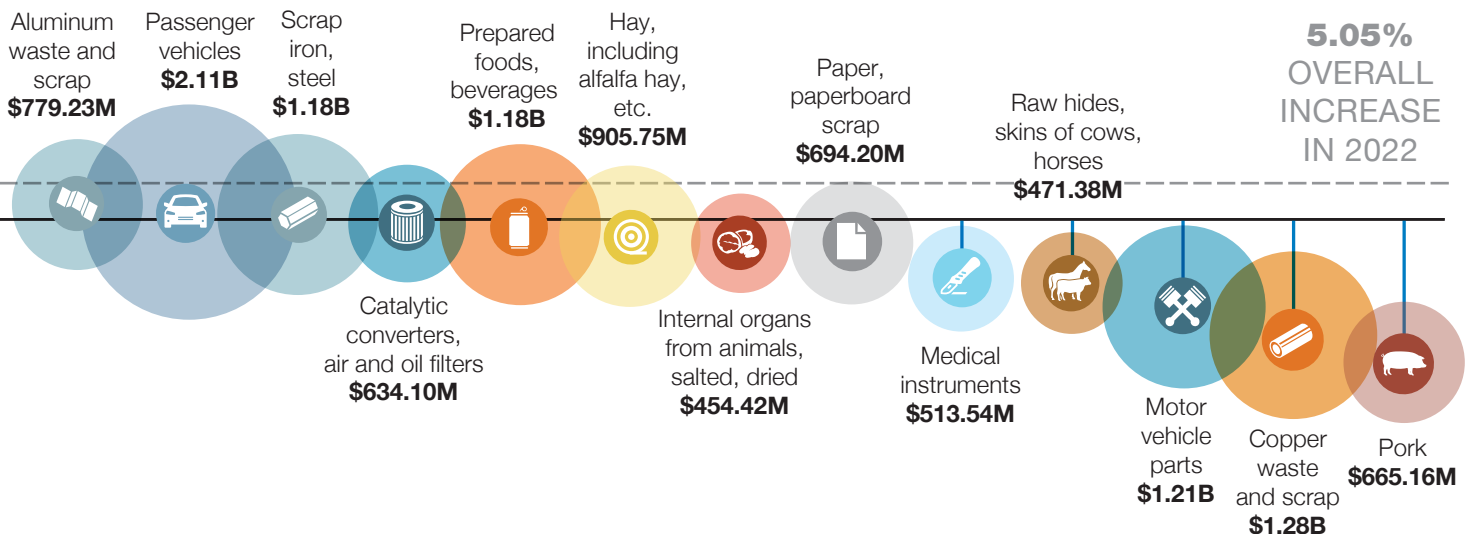
TOP 25 EXPORTS
REPRESENT
48.99%
OF ALL EXPORTS

CHART OF TOP
50 EXPORTS,
PAGE 14



MOST GROWTH VS. FASTEST GROWTH

This chart ranks the top 25 exports by the one-year change in dollar value (most growth), rather than the percentage gain shown in the data visualization (fastest growth).

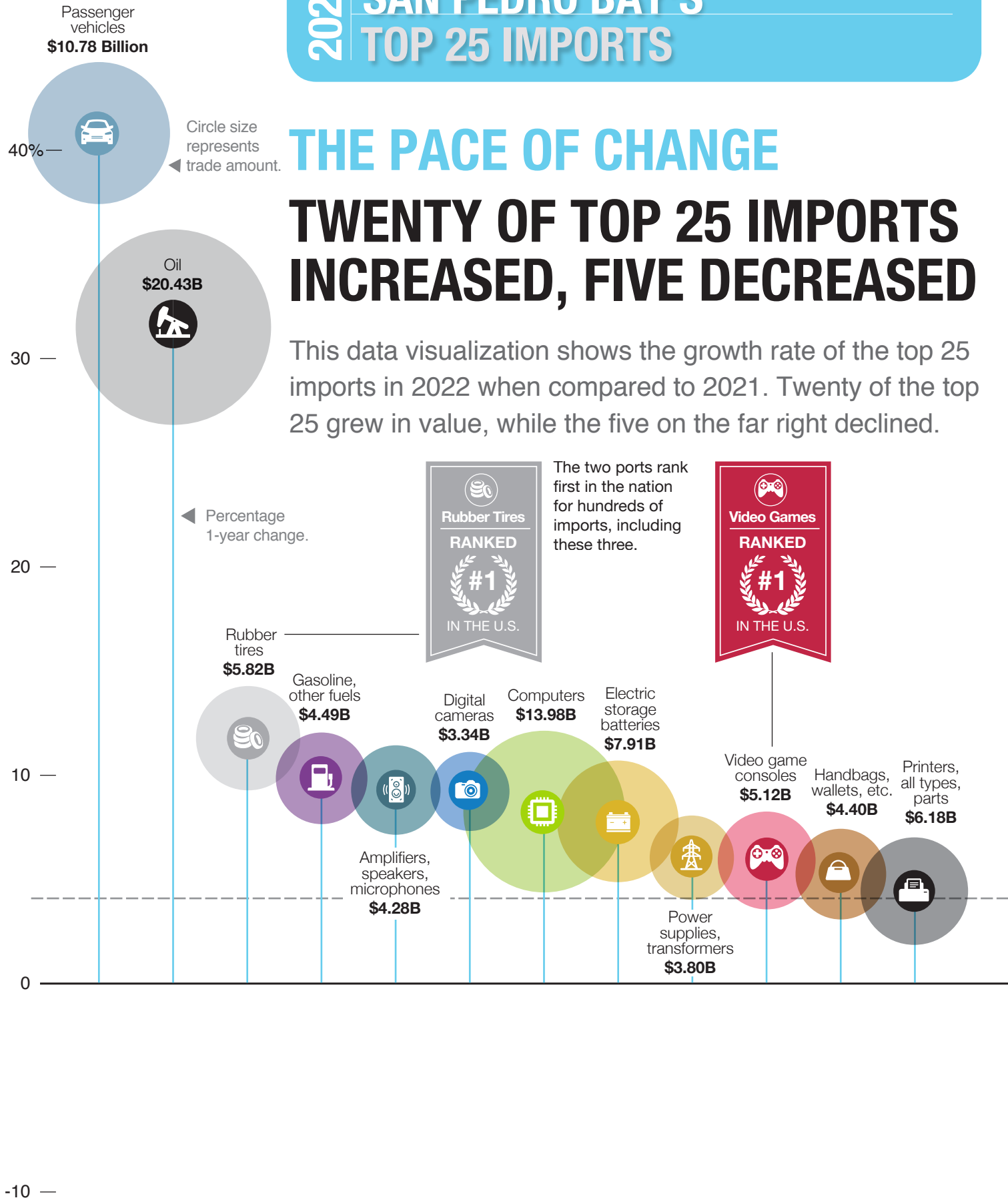


2022 | SAN PEDRO BAY'S TOP 25 IMPORTS

THE PACE OF CHANGE

TWENTY OF TOP 25 IMPORTS INCREASED, FIVE DECREASED

This data visualization shows the growth rate of the top 25 imports in 2022 when compared to 2021. Twenty of the top 25 grew in value, while the five on the far right declined.



TOTAL
IMPORTS
\$374.93
BILLION

1-YEAR CHANGE
4.08%

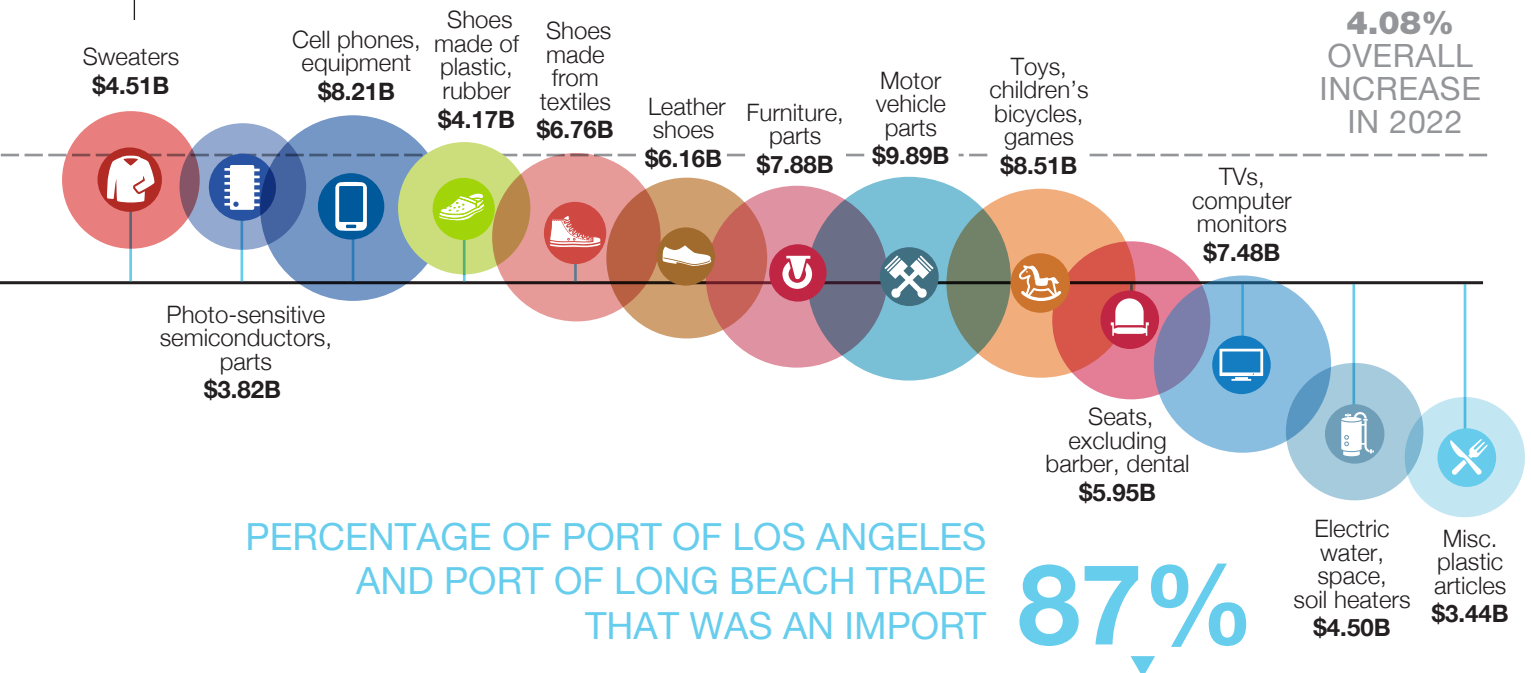
TOP 25 IMPORTS
REPRESENT
45.83%
OF ALL IMPORTS

CHART OF TOP
50 IMPORTS,
PAGE 15



MOST GROWTH VS. FASTEST GROWTH

This chart ranks the top 25 imports by the one-year change in dollar value (most growth), rather than the percentage gain shown in the data visualization (fastest growth).



Top 50 San Pedro Bay Trade Partners

1-YR CHG	2022 RANK	COUNTRY	TOTAL TRADE 2022	TOTAL TRADE 2021	CHANGE	TOTAL EXPORTS 2022	TOTAL EXPORTS 2021	CHANGE	TOTAL IMPORTS 2022	TOTAL IMPORTS 2021	CHANGE	SURPLUS/(DEFICIT) 2022
		World Total	\$433,003,115,288	\$415,511,393,433	4.21%	\$58,074,522,045	\$55,281,008,179	5.05%	\$374,928,593,243	\$360,230,385,254	4.08%	(\$316,854,071,198)
0	1	China	\$181,791,466,795	\$180,877,825,929	0.51%	\$16,428,379,077	\$15,896,825,771	3.34%	\$165,363,087,718	\$164,981,000,158	0.23%	(\$148,934,708,641)
0	2	Vietnam	\$44,151,289,502	\$42,151,979,624	4.74%	\$2,607,517,970	\$2,244,788,136	16.16%	\$41,543,771,532	\$39,907,191,488	4.10%	(\$38,936,253,562)
0	3	Japan	\$43,901,231,514	\$40,400,633,021	8.66%	\$7,537,579,592	\$7,330,923,496	2.82%	\$36,363,651,922	\$33,069,709,525	9.96%	(\$28,826,072,330)
1	4	South Korea	\$24,561,924,393	\$21,929,065,351	12.01%	\$6,458,527,174	\$5,145,694,033	25.51%	\$18,103,397,219	\$16,783,371,318	7.87%	(\$11,644,870,045)
-1	5	Taiwan	\$24,516,162,016	\$24,402,253,057	0.47%	\$3,545,882,589	\$3,691,086,785	-3.93%	\$20,970,279,427	\$20,711,166,272	1.25%	(\$17,424,396,838)
0	6	Thailand	\$18,096,569,443	\$16,619,013,260	8.89%	\$1,384,618,646	\$1,347,061,370	2.79%	\$16,711,950,797	\$15,271,951,890	9.43%	(\$15,327,332,151)
0	7	Indonesia	\$11,528,201,108	\$11,020,928,052	4.60%	\$1,417,834,733	\$1,320,706,067	7.35%	\$10,110,366,375	\$9,700,221,985	4.23%	(\$8,692,531,642)
0	8	Malaysia	\$7,871,853,971	\$7,685,747,653	2.42%	\$1,395,603,553	\$1,401,503,316	-0.42%	\$6,476,250,418	\$6,284,244,337	3.06%	(\$5,080,646,865)
1	9	Philippines	\$5,497,078,520	\$5,282,572,125	4.06%	\$1,259,121,959	\$1,125,123,192	11.91%	\$4,237,956,561	\$4,157,448,933	1.94%	(\$2,978,834,602)
1	10	Cambodia	\$5,447,939,785	\$5,267,243,769	3.43%	\$133,681,830	\$146,207,049	-8.57%	\$5,314,257,955	\$5,121,036,720	3.77%	(\$5,180,576,125)
1	11	India	\$5,269,810,232	\$4,860,014,715	8.43%	\$1,193,317,554	\$1,095,690,240	8.91%	\$4,076,492,678	\$3,764,324,475	8.29%	(\$2,883,175,124)
-3	12	Australia	\$5,009,703,414	\$5,411,894,642	-7.43%	\$3,683,434,807	\$4,082,701,328	-9.78%	\$1,326,268,607	\$1,329,193,314	-0.22%	\$2,357,166,200
2	13	Brazil	\$4,434,081,998	\$3,030,150,232	46.33%	\$166,987,192	\$170,827,891	-2.25%	\$4,267,094,806	\$2,859,322,341	49.23%	(\$4,100,107,614)
0	14	Ecuador	\$4,423,816,953	\$3,409,567,047	29.75%	\$118,544,112	\$44,296,908	167.61%	\$4,305,272,841	\$3,365,270,139	27.93%	(\$4,186,728,729)
-2	15	Germany	\$3,969,405,257	\$4,065,589,569	-2.37%	\$629,402,611	\$705,470,795	-10.78%	\$3,340,002,646	\$3,360,118,774	-0.60%	(\$2,710,600,035)
6	16	Iraq	\$3,918,511,320	\$1,888,397,738	107.50%	\$38,686,586	\$40,299,884	-4.00%	\$3,879,824,734	\$1,848,097,854	109.94%	(\$3,841,138,148)
4	17	Mexico	\$2,858,605,838	\$1,942,591,703	47.15%	\$429,487,586	\$206,853,483	107.63%	\$2,429,118,252	\$1,735,738,220	39.95%	(\$1,999,630,666)
1	18	Saudi Arabia	\$2,791,966,564	\$2,132,747,944	30.91%	\$350,007,164	\$263,515,238	32.82%	\$2,441,959,400	\$1,869,232,706	30.64%	(\$2,091,952,236)
-3	19	Singapore	\$2,715,806,603	\$2,704,249,242	0.43%	\$953,328,158	\$1,018,739,525	-6.42%	\$1,762,478,445	\$1,685,509,717	4.57%	(\$809,150,287)
-3	20	Colombia	\$2,316,521,846	\$2,253,526,012	2.80%	\$116,343,303	\$112,678,236	3.25%	\$2,200,178,543	\$2,140,847,776	2.77%	(\$2,083,835,240)
-3	21	Bangladesh	\$2,233,682,091	\$2,218,873,182	0.67%	\$222,570,544	\$201,886,634	10.25%	\$2,011,111,547	\$2,016,986,548	-0.29%	(\$1,788,541,003)
-2	22	Hong Kong	\$1,838,071,401	\$1,976,833,335	-7.02%	\$1,379,282,238	\$1,560,648,006	-11.62%	\$458,789,163	\$416,185,329	10.24%	\$920,493,075
0	23	Italy	\$1,753,883,556	\$1,715,562,154	2.23%	\$112,070,761	\$116,735,146	-4.00%	\$1,641,812,795	\$1,598,827,008	2.69%	(\$1,529,742,034)
0	24	Guyana	\$1,582,685,417	\$1,578,911,702	0.24%	\$1,505,191	\$1,068,044	40.93%	\$1,581,180,226	\$1,577,843,658	0.21%	(\$1,579,675,035)
2	25	Chile	\$1,512,076,172	\$1,081,222,018	39.85%	\$701,683,123	\$242,198,120	189.71%	\$810,393,049	\$839,023,898	-3.41%	(\$108,709,926)
0	26	Netherlands	\$1,170,546,323	\$1,180,498,790	-0.84%	\$657,741,104	\$704,722,725	-6.67%	\$512,805,219	\$475,776,065	7.78%	\$144,935,885
-2	27	New Zealand	\$1,114,017,327	\$1,267,677,868	-12.12%	\$447,861,622	\$590,003,260	-24.09%	\$666,155,705	\$677,674,608	-1.70%	(\$218,294,083)
0	28	United Kingdom	\$1,068,914,014	\$1,049,094,517	1.89%	\$402,695,895	\$441,429,116	-8.77%	\$666,218,119	\$607,665,401	9.64%	(\$263,522,224)
4	29	Canada	\$886,790,207	\$718,574,257	23.41%	\$532,184	\$221,357	140.42%	\$886,258,023	\$718,352,900	23.37%	(\$885,725,839)
2	30	France	\$857,831,976	\$810,849,160	5.79%	\$170,266,482	\$189,015,036	-9.92%	\$687,565,494	\$621,834,124	10.57%	(\$517,299,012)
0	31	United Arab Emirates	\$768,911,705	\$837,041,748	-8.14%	\$456,414,246	\$360,077,254	26.75%	\$312,497,459	\$476,964,494	-34.48%	\$143,916,787
2	32	Pakistan	\$751,371,940	\$711,999,434	5.53%	\$192,995,474	\$187,553,767	2.90%	\$558,376,466	\$524,445,667	6.47%	(\$365,380,992)
-3	33	Belgium	\$715,716,374	\$839,643,970	-14.76%	\$497,933,274	\$595,536,552	-16.39%	\$217,783,100	\$244,107,418	-10.78%	\$280,150,174
2	34	Peru	\$711,070,964	\$573,676,961	23.95%	\$352,846,453	\$244,079,899	44.56%	\$358,224,511	\$329,597,062	8.69%	(\$5,378,058)
0	35	Spain	\$703,188,025	\$696,945,439	0.90%	\$158,350,382	\$153,640,590	3.07%	\$544,837,643	\$543,304,849	0.28%	(\$386,487,261)
1	36	Austria	\$552,924,798	\$545,428,679	1.37%	\$24,983,691	\$24,961,577	0.09%	\$527,941,107	\$520,467,102	1.44%	(\$502,957,416)
3	37	Turkey	\$527,806,922	\$477,296,294	10.58%	\$160,135,947	\$86,393,246	85.36%	\$367,670,975	\$390,903,048	-5.94%	(\$207,535,028)
0	38	Argentina	\$493,367,478	\$496,363,054	-0.60%	\$61,924,338	\$62,108,671	-0.30%	\$431,443,140	\$434,254,383	-0.65%	(\$369,518,802)
0	39	Finland	\$454,628,362	\$483,817,246	-6.03%	\$6,380,029	\$9,937,742	-35.80%	\$448,248,333	\$473,879,504	-5.41%	(\$441,868,304)
1	40	South Africa	\$433,993,855	\$425,354,421	2.03%	\$60,775,752	\$67,260,308	-9.64%	\$373,218,103	\$358,094,113	4.22%	(\$312,442,351)
1	41	Sri Lanka	\$410,224,629	\$408,396,136	0.45%	\$35,427,090	\$32,362,000	9.47%	\$374,797,539	\$376,034,136	-0.33%	(\$339,370,449)
1	42	Switzerland	\$383,414,090	\$397,105,619	-3.45%	\$28,093,974	\$30,090,024	-6.63%	\$355,320,116	\$367,015,595	-3.19%	(\$327,226,142)
1	43	Burma	\$352,526,460	\$346,961,678	1.60%	\$13,878,178	\$12,963,864	7.05%	\$338,648,282	\$333,997,814	1.39%	(\$324,770,104)
1	44	Poland	\$343,440,536	\$335,545,602	2.35%	\$102,480,397	\$102,479,363	0.00%	\$240,960,139	\$233,066,239	3.39%	(\$138,479,742)
4	45	Kazakhstan	\$332,343,938	\$276,231,983	20.31%	\$7,768,085	\$6,595,204	17.78%	\$324,575,853	\$269,636,779	20.38%	(\$316,807,768)
0	46	Norway	\$323,637,212	\$301,355,013	7.39%	\$20,083,516	\$21,714,625	-7.51%	\$303,553,696	\$279,640,388	8.55%	(\$283,470,180)
0	47	Hungary	\$305,960,826	\$296,783,638	3.09%	\$18,889,156	\$18,066,965	4.55%	\$287,071,670	\$278,716,673	3.00%	(\$268,182,514)
-19	48	Russia	\$255,082,523	\$844,712,183	-69.80%	\$11,400,040	\$40,357,591	-71.75%	\$243,682,483	\$804,354,592	-69.70%	(\$232,282,443)
3	49	Jordan	\$234,656,373	\$208,226,239	12.69%	\$94,669,050	\$74,664,331	26.79%	\$139,987,323	\$133,561,908	4.81%	(\$45,318,273)
0	50	Israel	\$232,555,738	\$275,996,608	-15.74%	\$70,878,657	\$79,704,071	-11.07%	\$161,677,081	\$196,292,537	-17.63%	(\$90,798,424)

Source: WorldCity analysis of U.S. Census Bureau data

Top 50 U.S. Ports

1-YR CHNG RANK	2022 PORT	TOTAL TRADE 2022	TOTAL TRADE 2021	CHANGE	TOTAL EXPORTS 2022	TOTAL EXPORTS 2021	CHANGE	TOTAL IMPORTS 2022	TOTAL IMPORTS 2021	CHANGE	SURPLUS/ (DEFICIT) 2022
	World Total	\$5,309,368,844,393	\$4,585,410,894,287	15.79%	\$2,062,937,255,943	\$1,754,300,367,662	17.59%	\$3,246,431,588,450	\$2,831,110,526,625	14.67%	(\$1,183,494,332,507)
0	1 Chicago O'Hare International Airport	\$329,922,418,426	\$304,773,614,854	8.25%	\$69,881,171,363	\$64,556,679,366	8.25%	\$260,041,247,063	\$240,216,935,488	8.25%	(\$190,160,075,700)
0	2 Port of Los Angeles	\$311,819,063,221	\$296,099,339,484	5.31%	\$28,461,587,314	\$26,881,987,666	5.88%	\$283,357,475,907	\$269,217,351,818	5.25%	(\$254,895,888,593)
0	3 Port Laredo	\$299,446,457,854	\$248,341,176,009	20.58%	\$115,937,068,324	\$99,047,910,183	17.05%	\$183,509,389,530	\$149,293,265,826	22.92%	(\$67,572,321,206)
1	4 Port of Newark	\$259,502,380,488	\$228,169,286,113	13.73%	\$19,841,925,818	\$19,388,637,282	2.34%	\$239,660,454,670	\$208,780,648,831	14.79%	(\$219,818,528,852)
-1	5 John F. Kennedy International Airport	\$258,048,582,690	\$236,359,150,475	9.18%	\$118,886,408,185	\$105,083,366,805	13.14%	\$139,162,174,505	\$131,275,783,670	6.01%	(\$20,275,766,320)
0	6 Port of Houston	\$241,425,583,070	\$170,887,766,170	41.28%	\$131,659,259,034	\$95,073,964,512	38.48%	\$109,766,324,036	\$75,813,801,658	44.78%	\$21,892,934,998
1	7 Port of New Orleans	\$163,431,296,950	\$140,958,681,958	15.94%	\$95,102,389,556	\$80,259,365,419	18.49%	\$68,328,907,394	\$60,699,316,539	12.57%	\$26,773,482,162
-1	8 Detroit Ambassador Bridge, MI	\$158,214,935,732	\$144,292,935,125	9.65%	\$83,515,691,315	\$76,717,187,331	8.86%	\$74,699,244,417	\$67,575,747,794	10.54%	\$8,816,446,898
0	9 Los Angeles International Airport	\$153,126,582,683	\$139,189,704,237	10.01%	\$61,459,149,235	\$56,820,141,607	8.16%	\$91,667,433,448	\$82,369,562,630	11.29%	(\$30,208,284,213)
0	10 Port of Savannah, GA	\$147,970,241,082	\$127,580,793,071	15.98%	\$34,395,908,556	\$30,164,909,439	14.03%	\$113,574,332,526	\$97,415,883,632	16.59%	(\$79,178,423,970)
0	11 Port Huron Blue Water Bridge, MI	\$126,987,572,284	\$109,419,989,966	16.06%	\$57,105,631,712	\$49,169,415,455	16.14%	\$69,881,940,572	\$60,250,574,511	15.99%	(\$12,776,308,860)
0	12 Port of Long Beach	\$121,184,052,067	\$103,692,330,212	16.87%	\$29,612,934,731	\$26,819,420,865	10.42%	\$91,571,117,336	\$76,872,909,347	19.12%	(\$61,958,182,605)
0	13 Port of Virginia	\$106,880,953,085	\$90,768,726,127	17.75%	\$35,602,136,079	\$30,601,520,376	16.34%	\$71,278,817,006	\$60,167,205,751	18.47%	(\$35,676,680,927)
0	14 Port of Charleston	\$99,444,487,215	\$89,963,945,718	10.54%	\$28,539,168,374	\$29,826,309,792	-4.32%	\$70,905,318,841	\$60,137,635,926	17.91%	(\$42,366,150,467)
0	15 Buffalo Peace Bridge, NY	\$95,359,297,388	\$83,509,478,183	14.19%	\$47,220,422,882	\$42,563,483,030	10.94%	\$48,138,874,506	\$40,945,995,153	17.57%	(\$918,451,624)
9	16 Port of Corpus Christi, TX	\$94,406,567,157	\$56,717,965,120	66.45%	\$86,295,234,222	\$51,471,448,990	67.66%	\$8,111,332,935	\$5,246,516,130	54.60%	\$78,183,901,287
-1	17 Cleveland's Hopkins International Airport, OH	\$93,957,338,181	\$81,952,505,959	14.65%	\$49,713,491,703	\$43,641,098,223	13.91%	\$44,243,846,478	\$38,311,407,736	15.48%	\$5,469,645,225
-1	18 Anchorage International Airport, AK	\$77,868,508,935	\$72,081,633,094	8.03%	\$25,310,496,567	\$25,064,586,564	0.98%	\$52,558,012,368	\$47,017,046,530	11.79%	(\$27,247,515,801)
2	19 Ysleta-Zaragoza Bridge, TX	\$77,149,814,394	\$64,461,075,264	19.68%	\$25,415,098,627	\$21,086,122,025	20.53%	\$51,734,715,767	\$43,374,953,239	19.27%	(\$26,319,617,140)
4	20 Port of Baltimore, MD	\$74,377,674,880	\$61,375,210,161	21.19%	\$19,131,486,064	\$17,040,120,979	12.27%	\$55,246,188,816	\$44,335,089,182	24.61%	(\$36,114,702,752)
-2	21 Miami Int'l Airport	\$73,854,712,317	\$69,264,836,837	6.63%	\$44,192,744,824	\$39,666,617,199	11.41%	\$29,661,967,493	\$29,598,219,638	0.22%	\$14,530,777,331
-2	22 Low-value exports	\$72,375,412,573	\$65,506,611,434	10.49%	\$72,375,412,573	\$65,506,611,434	10.49%	\$0	\$0	NA	\$72,375,412,573
-5	23 San Francisco International Airport, CA	\$72,194,817,944	\$70,533,657,793	2.36%	\$35,635,263,441	\$38,402,842,341	-7.21%	\$36,559,554,503	\$32,130,815,452	13.78%	(\$924,291,062)
-1	24 Dallas-Fort Worth International Airport, TX	\$66,213,142,464	\$61,378,823,383	7.88%	\$28,418,926,307	\$25,872,301,983	9.84%	\$37,794,216,157	\$35,506,521,400	6.44%	(\$9,375,289,850)
1	25 Otay Mesa Freeway Border Crossing, CA	\$62,491,819,133	\$55,395,917,505	12.81%	\$21,748,542,159	\$18,725,474,140	16.14%	\$40,743,276,974	\$36,670,443,365	11.11%	(\$18,994,734,815)
-4	26 Hartsfield-Jackson Atlanta International Airport	\$59,096,460,948	\$63,692,407,836	-7.22%	\$21,171,292,073	\$21,625,497,217	-2.10%	\$37,925,168,875	\$42,066,910,619	-9.85%	(\$16,753,876,802)
0	27 Port of Oakland, CA	\$52,317,462,166	\$50,045,744,407	4.54%	\$20,185,915,235	\$20,763,575,122	-2.78%	\$32,131,546,931	\$29,282,169,285	9.73%	(\$11,945,631,696)
0	28 Port of New York	\$50,264,899,619	\$44,919,898,827	11.90%	\$32,304,323,372	\$31,063,780,024	3.99%	\$17,960,576,247	\$13,856,118,803	29.62%	\$14,343,747,125
1	29 Pharr International Bridge, TX	\$46,436,697,354	\$41,682,730,519	11.41%	\$18,739,006,706	\$16,437,155,630	14.00%	\$27,697,690,648	\$25,245,574,889	9.71%	(\$8,958,683,942)
-1	30 Port of Tacoma, WA	\$41,867,857,633	\$44,418,396,530	-5.74%	\$8,355,007,833	\$7,871,270,098	6.15%	\$33,512,849,800	\$36,547,126,432	-8.30%	(\$25,157,841,967)
0	31 Port of Philadelphia	\$41,553,411,661	\$34,085,912,271	21.91%	\$7,747,787,160	\$5,433,087,422	42.60%	\$33,805,624,501	\$28,652,824,849	17.98%	(\$26,057,837,341)
2	32 Pembina Border Crossing, ND	\$37,740,529,002	\$30,053,725,582	25.58%	\$21,375,200,385	\$16,008,873,980	33.52%	\$16,365,328,617	\$14,044,851,602	16.52%	\$5,009,871,768
12	33 Port of Port Arthur, TX	\$35,817,360,931	\$22,020,810,955	62.65%	\$19,496,787,880	\$11,226,140,732	73.67%	\$16,320,573,051	\$10,794,670,223	51.19%	\$3,176,214,829
-2	34 Eagle Pass	\$34,018,146,549	\$33,826,926,148	0.57%	\$10,874,698,203	\$10,486,663,750	3.70%	\$23,143,448,346	\$23,340,262,398	-0.84%	(\$12,268,750,143)
0	35 Blaine / Surrey Border Crossing, WA	\$33,848,098,863	\$30,043,391,369	12.66%	\$16,192,482,817	\$14,253,850,005	13.60%	\$17,655,616,046	\$15,789,541,364	11.82%	(\$1,463,133,229)
0	36 Rouses Point / Lacolle Border Crossing, NY	\$32,970,970,100	\$29,516,496,369	11.70%	\$12,134,944,487	\$10,138,883,192	19.69%	\$20,836,025,613	\$19,377,613,177	7.53%	(\$8,701,081,126)
0	37 Port Miami	\$32,925,675,398	\$28,628,536,396	15.01%	\$11,856,487,867	\$10,220,029,988	16.01%	\$21,069,187,531	\$18,408,506,408	14.45%	(\$9,212,699,664)
1	38 Seattle-Tacoma International Airport	\$31,736,105,584	\$26,540,351,566	19.58%	\$22,960,381,310	\$18,598,034,710	23.46%	\$8,775,724,274	\$7,942,316,856	10.49%	\$14,184,657,036
-1	39 Santa Teresa Border Crossing, NM	\$31,536,040,462	\$27,372,054,395	15.21%	\$11,996,086,685	\$11,567,140,735	3.71%	\$19,539,953,777	\$15,804,913,660	23.63%	(\$7,543,867,092)
0	40 Nogales Border Crossing, AZ	\$29,168,883,439	\$25,103,007,713	16.20%	\$10,264,924,608	\$9,883,377,143	3.86%	\$18,903,958,831	\$15,219,630,570	24.21%	(\$8,639,034,223)
-8	41 Port of Seattle, WA	\$29,161,239,555	\$31,516,247,640	-7.47%	\$7,094,494,698	\$8,931,616,095	-20.57%	\$22,066,744,857	\$22,584,631,545	-2.29%	(\$14,972,250,159)
0	42 Port Everglades, FL	\$28,622,101,836	\$24,167,302,247	18.43%	\$14,290,532,926	\$11,783,301,926	21.28%	\$14,331,568,910	\$12,384,000,321	15.73%	(\$41,035,984)
6	43 Port of Peoria, IL	\$27,982,815,985	\$16,907,508,189	65.51%	\$1,174,970	\$1,355,346	-13.31%	\$27,981,641,015	\$16,906,152,843	65.51%	(\$27,980,466,045)
2	44 Port of Mobile, AL	\$27,699,293,862	\$21,327,046,436	29.88%	\$6,476,978,672	\$5,024,749,086	28.90%	\$21,222,315,190	\$16,302,297,350	30.18%	(\$14,745,336,518)
-2	45 Port of Jacksonville, FL	\$26,940,709,222	\$23,441,614,418	14.93%	\$7,557,304,455	\$6,345,789,698	19.09%	\$19,383,404,767	\$17,095,824,720	13.38%	(\$11,826,100,312)
4	46 Port of Lake Charles, LA	\$26,644,493,898	\$11,312,372,320	135.53%	\$25,581,421,801	\$9,881,492,819	158.88%	\$1,063,072,097	\$1,430,879,501	-25.70%	\$24,518,349,704
-6	47 El Paso Border Crossing, TX	\$26,491,958,281	\$24,454,633,308	8.33%	\$17,981,639,862	\$15,751,850,055	14.16%	\$8,510,318,419	\$8,702,783,253	-2.21%	\$9,471,321,443
-4	48 Port of Brunswick, GA	\$26,035,772,359	\$22,665,966,602	14.87%	\$9,398,712,724	\$9,101,183,024	3.27%	\$16,637,059,635	\$13,564,783,578	22.65%	(\$7,238,346,911)
-1	49 Port of Beaumont, TX	\$25,541,921,085	\$17,338,787,298	47.31%	\$23,641,487,603	\$16,269,497,237	45.31%	\$1,900,433,482	\$1,069,290,061	77.73%	\$21,741,054,121
-3	50 Port of Southern Louisiana, Gramercy, St. James Parish	\$25,467,987,554	\$18,638,879,252	36.64%	\$20,635,500,510	\$14,096,298,803	46.39%	\$4,832,487,044	\$4,542,580,449	6.38%	\$15,803,013,466

Source: WorldCity analysis of U.S. Census Bureau data

Top 50 San Pedro Bay Export Commodities

1-YEAR CHANGE	2022 RANK		2022	2021	ONE-YEAR CHANGE
		Total, All Exports	\$58,074,522,045	\$55,281,008,179	5.05%
0	1	Cotton	\$3,964,128,714	\$3,362,768,904	17.88%
0	2	Frozen beef	\$2,957,413,087	\$2,454,229,174	20.50%
0	3	Passenger vehicles	\$2,110,364,021	\$2,086,548,273	1.14%
0	4	Almonds, walnuts, pistachios, hazelnuts, etc.	\$2,031,634,010	\$1,839,043,479	10.47%
2	5	Soybeans	\$1,368,896,563	\$1,228,481,007	11.43%
6	6	Petroleum products	\$1,338,122,853	\$815,822,327	64.02%
-2	7	Copper waste and scrap	\$1,278,815,097	\$1,519,916,101	-15.86%
-2	8	Motor vehicle parts	\$1,206,810,993	\$1,372,620,865	-12.08%
0	9	Scrap iron, steel	\$1,177,108,902	\$1,175,517,849	0.14%
-2	10	Prepared foods, beverages	\$1,175,610,491	\$1,184,489,093	-0.75%
14	11	Gasoline, other refined petroleum	\$1,164,126,848	\$401,652,682	189.83%
-2	12	Hay, including alfalfa hay, etc.	\$905,752,423	\$928,672,987	-2.47%
0	13	Milk and cream, concentrated or sweetened	\$789,792,701	\$769,879,059	2.59%
0	14	Aluminum waste and scrap	\$779,227,353	\$762,729,950	2.16%
1	15	Foods for dogs, cats, other animals	\$715,460,213	\$651,066,906	9.89%
-1	16	Paper, paperboard scrap	\$694,286,680	\$718,921,216	-3.43%
-6	17	Pork	\$665,158,173	\$824,271,001	-19.30%
-1	18	Catalytic converters, air and oil filters	\$634,012,915	\$635,699,770	-0.27%
0	19	Sugar and starch residues	\$597,009,662	\$538,319,959	10.90%
2	20	Compounds of yttrium	\$514,730,423	\$435,667,529	18.15%
-3	21	Medical instruments	\$513,536,452	\$558,969,364	-8.13%
13	22	Hydrogen, raw gases	\$490,181,074	\$321,447,710	52.49%
-3	23	Raw hides, skins of cows, horses	\$471,347,131	\$516,717,567	-8.78%
-3	24	Internal organs from animals	\$454,423,188	\$469,245,334	-3.16%
1	25	Beef, fresh or chilled	\$452,520,750	\$385,037,003	17.53%
-3	26	Polymers of ethylene	\$389,294,848	\$435,458,902	-10.60%
10	27	Fruit, nuts, prepared or preserved	\$389,132,930	\$301,098,554	29.24%
5	28	Electric storage batteries	\$380,832,185	\$340,591,570	11.81%
1	29	Plastic plates, sheet, film	\$375,986,243	\$361,289,946	4.07%
-6	30	Civilian aircraft, parts	\$374,500,038	\$409,003,279	-8.44%
-3	31	Pumps for dispensing liquids	\$369,139,444	\$376,100,124	-1.85%
-3	32	Make-up and skin-care products	\$368,983,556	\$372,610,455	-0.97%
-6	33	Polyethers, epoxides and polyesters, primary forms	\$346,128,296	\$380,303,971	-8.99%
-3	34	Borates	\$345,082,136	\$355,112,590	-2.82%
-1	35	Taps, cocks and valves for pipes, tanks	\$330,015,048	\$329,186,897	0.25%
-4	36	Engine parts	\$312,984,019	\$344,818,905	-9.23%
43	37	Misc. aircraft parts	\$310,239,082	\$151,536,263	104.73%
0	38	Citrus fruit	\$305,388,507	\$283,350,271	7.78%
14	39	Aluminum plates, sheets, strip more than 0.2mm thick	\$300,341,559	\$223,148,398	34.59%
-4	40	Mechanized medical equipment	\$273,552,235	\$311,434,256	-12.16%
-2	41	Transmission shafts, bearings, gears	\$272,713,762	\$282,411,689	-3.43%
17	42	Cell phones, equipment	\$258,394,761	\$191,054,515	35.25%
1	43	Whey, misc. milk products	\$256,934,834	\$247,965,746	3.62%
-2	44	Binders for found molds; chemical products	\$254,503,678	\$249,082,860	2.18%
5	45	Misc. plastic articles	\$252,043,322	\$236,031,809	6.78%
8	46	Aircraft, motor vehicle engines	\$240,731,780	\$220,190,910	9.33%
-7	47	Compressors and pumps	\$234,765,297	\$255,962,997	-8.28%
0	48	Machining centers for metal work	\$234,202,022	\$240,395,008	-2.58%
0	49	Sand-blasting, other liquid-dispersing equipment	\$228,742,074	\$238,324,581	-4.02%
1	50	Misc. organic cleansers, including soaps	\$227,027,392	\$232,152,305	-2.21%

Source: WorldCity analysis of U.S. Census Bureau data

Top 50 San Pedro Bay Import Commodities

1-YEAR CHANGE	2022 RANK		2022	2021	ONE-YEAR CHANGE
		Total, All Imports	\$374,928,593,243	\$360,230,385,254	4.08%
0	1	Oil	\$20,429,751,172	\$15,532,937,869	31.53%
0	2	Computers	\$13,983,136,582	\$12,907,982,330	8.33%
5	3	Passenger vehicles	\$10,778,616,677	\$7,654,574,352	40.81%
-1	4	Motor vehicle parts	\$9,893,239,871	\$9,887,961,954	0.05%
-1	5	Toys	\$8,514,961,695	\$8,517,534,933	-0.03%
-1	6	Cell phones, equipment	\$8,214,428,976	\$8,024,054,925	2.37%
2	7	Electric storage batteries	\$7,908,319,170	\$7,339,014,652	7.76%
-2	8	Furniture, parts	\$7,881,367,955	\$7,876,527,121	0.06%
-2	9	TVs, computer monitors	\$7,476,889,884	\$7,682,516,532	-2.68%
0	10	Shoes made from textiles	\$6,757,359,772	\$6,660,681,355	1.45%
2	11	Printers	\$6,180,378,581	\$5,919,624,875	4.40%
-1	12	Leather shoes	\$6,164,263,464	\$6,117,488,281	0.76%
-1	13	Seats, excluding barber, dental	\$5,953,823,892	\$6,029,759,074	-1.26%
0	14	Rubber tires	\$5,820,521,148	\$5,208,449,656	11.75%
0	15	Video game consoles	\$5,122,411,734	\$4,834,513,350	5.96%
1	16	Sweaters	\$4,505,203,440	\$4,359,849,144	3.33%
-1	17	Electric water, space, soil heaters	\$4,497,134,536	\$4,726,683,342	-4.86%
1	18	Gasoline, refined petroleum	\$4,485,027,000	\$4,085,110,944	9.79%
-1	19	Handbags, wallets, jewelry cases, etc.	\$4,404,313,752	\$4,181,728,077	5.32%
1	20	Amplifiers, speakers, microphones	\$4,282,404,329	\$3,916,169,172	9.35%
-1	21	Shoes made of rubber or plastic	\$4,173,315,388	\$4,080,140,430	2.28%
0	22	Photo-sensitive semi-conductors, parts	\$3,821,529,459	\$3,711,706,083	2.96%
1	23	Power supplies, transformers	\$3,797,611,230	\$3,579,805,160	6.08%
-1	24	Misc. plastic articles	\$3,443,125,973	\$3,640,980,368	-5.43%
3	25	Cameras, including TV cameras	\$3,338,240,926	\$3,056,253,532	9.23%
-1	26	Equipment, parts for exercising	\$3,320,142,543	\$3,434,840,290	-3.34%
0	27	Plastic tableware and other products	\$3,120,069,647	\$3,130,148,983	-0.32%
-2	28	Lamp and lighting parts	\$3,022,700,473	\$3,183,319,735	-5.05%
1	29	Insulated wire, cable	\$2,942,654,240	\$2,816,908,844	4.46%
3	30	Women's or girls' suits, not knit	\$2,938,140,234	\$2,759,648,529	6.47%
-2	31	Taps, cocks and valves for pipes, tanks	\$2,922,829,358	\$2,856,850,551	2.31%
0	32	Compressors and pumps	\$2,794,698,122	\$2,763,887,824	1.11%
-2	33	Saws, drills and other hand tools	\$2,742,746,994	\$2,769,173,932	-0.95%
0	34	Refrigerators, freezers	\$2,547,846,106	\$2,533,275,392	0.58%
0	35	Hardware for fixtures	\$2,473,241,778	\$2,452,707,698	0.84%
0	36	Screws, nuts, bolts, washers	\$2,371,849,245	\$2,312,918,181	2.55%
1	37	Women's or girls' suits, knit or crocheted	\$2,252,660,123	\$2,162,839,188	4.15%
4	38	Motorcycles, mopeds, etc.	\$2,197,920,525	\$1,930,864,880	13.83%
-2	39	Misc. articles made from textile materials	\$2,169,330,411	\$2,204,606,947	-1.60%
0	40	Carnival art	\$2,133,702,722	\$2,103,241,760	1.45%
4	41	Binders for found molds; chemical products	\$1,948,169,263	\$1,797,882,391	8.36%
-3	42	Vacuum cleaners, parts	\$1,872,897,076	\$2,121,493,997	-11.72%
0	43	Plastic boxes, containers	\$1,864,645,023	\$1,861,392,939	0.17%
0	44	Air-conditioning machines	\$1,828,642,510	\$1,820,699,146	0.44%
2	45	Computer parts	\$1,763,087,893	\$1,767,738,923	-0.26%
4	46	Men's or boys' suits, not knit	\$1,748,504,882	\$1,710,666,786	2.21%
-1	47	Catalytic converters, air and oil filters	\$1,748,047,377	\$1,786,498,156	-2.15%
3	48	Women's or girls' slips	\$1,709,238,930	\$1,676,872,137	1.93%
5	49	Electrical supplies, apparatus, less than 1000V	\$1,661,346,555	\$1,578,520,719	5.25%
5	50	Pumps for dispensing liquids	\$1,656,386,469	\$1,568,881,454	5.58%

Source: WorldCity analysis of U.S. Census Bureau data

The background features a blue sky with white clouds at the top, transitioning into a dark blue area representing water. On the right side, a white line-art illustration of a port crane is visible. A vertical white line on the left side of the dark blue area serves as a depth scale, with numerical markers at 40, 45, and 50. Various port-related metrics are listed along this scale, with a white line curving upwards from the bottom left towards the right side of the scale.

READY, INNOVATIVE & RESOLUTION FOCUSED

40 — Reliable access between U.S. Markets and the Pacific Rim

Optimal supply chain readiness

Superior, Actionable, Operational Data Visibility

45

Recognized industry leadership

Innovative Port Optimizer™ supply chain solution

50

Leader in Environmental Stewardship

53 ft channel and berth depth

EFFICIENCY FROM TOP TO BOTTOM.

portoflosangeles.org



@PortofLA

THE PORT **LA**
OF LOS ANGELES