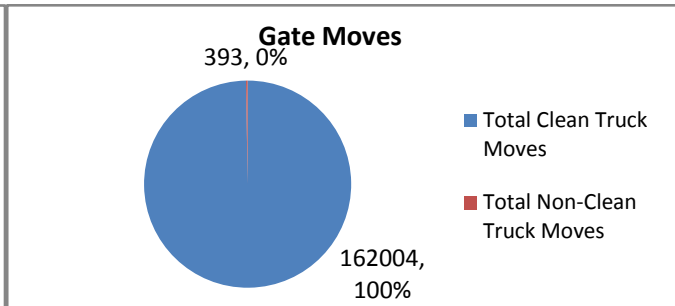
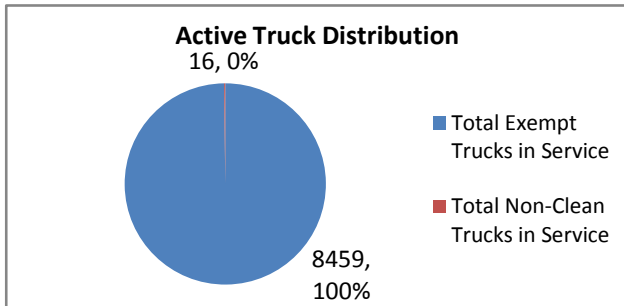




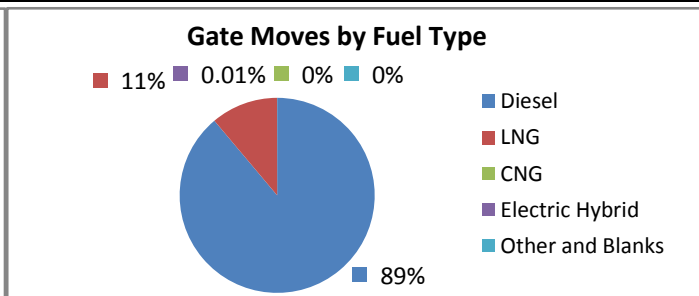
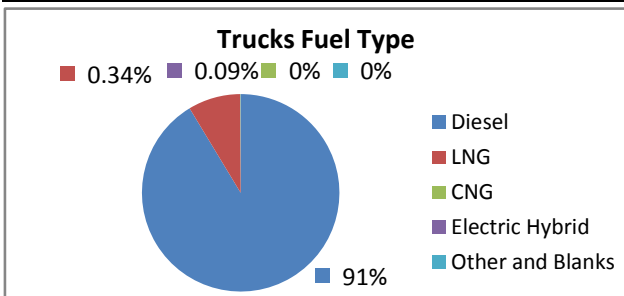
## Port of Los Angeles - Clean Truck Program - Gate Move Data Analysis

Report Period: 01/01/12 - 01/29/12

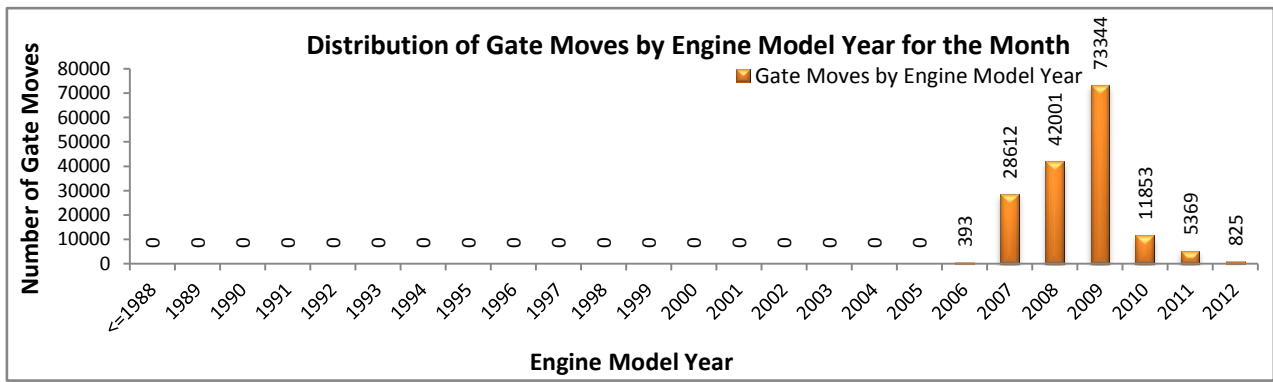
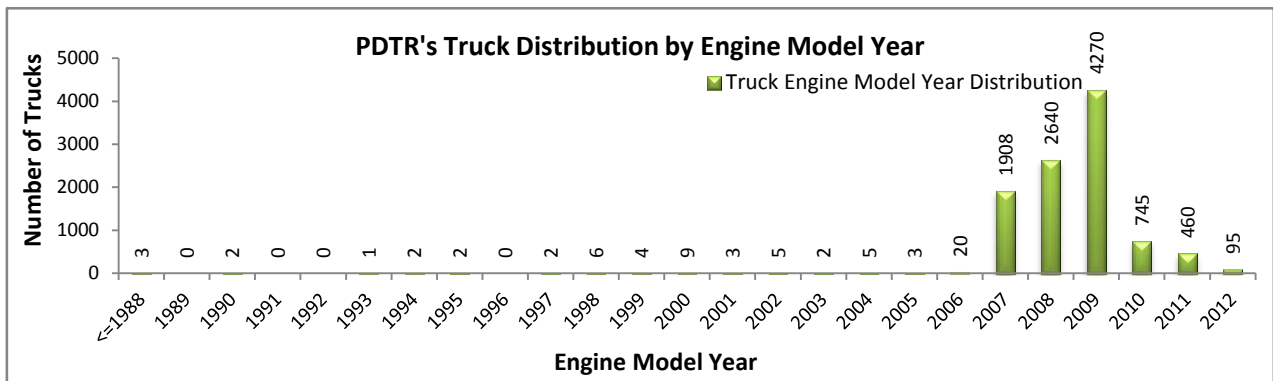
Overall Summary Data		More Information		
Total Moves	308519	PortCheck Data Range:	01/01/12 - 01/29/12	
Total Not Exempt Moves	169026	PDTR Date Collected:	1/31/2012	
Moves made with unreadable RFID	1803	<b>Notes:</b>		
Total Adjusted Not Exempt Moves	167223	This analysis uses PortCheck's "Not Exempt" moves and combines all PortCheck's moves (incl.Exempt Empty, Transship, and etc.) in the POLA & POLB portion of this analysis.		
Total Adjusted Uniquely Matched <sup>1</sup>	162397			
% Moves Uniquely Matched <sup>2</sup>	97.1%	"Adjusted Moves": Total of "Not Exempt" moves with readable data. Moves made by unreadable RFID numbers are excluded from data analysis.		
Total Registered Trucks in PDTR	10187			
Total Trucks in Service	8475	Any trucks registered in the PDTR with an R1, R2, or R5 Access code was not used in this analysis.		
% Total Trucks in Service	83.2%			
Total Registered Exempt Trucks	10118	"Clean Truck/Exempt Truck": 2007 compliant trucks exempt from Clean Truck Program fees. Not ARB DTR exempt.		
Total Exempt Trucks in Service	8459			
% Total Exempt Trucks in Service	83.6%	There is no normalized data since 97.1% "Not Exempt" moves are uniquely matched.		
Total Non-Clean Trucks in Service	16			
Total Clean Truck Moves	162004	599 out of 911 Current concessionaires made gate moves.		
Total Non-Clean Truck Moves	393	<b>POLA &amp; POLB Combined Gate Move Summary</b>		
Total LMCs that made move	599	Total Moves (all types) Matched	522577	%
Total LMCs that made Clean Moves Only <sup>3</sup>	596	Total Moves by Clean Trucks w/Diesel Fuel	521141	100%
Total LMCs that have Clean Trucks made move	599	Total Moves by Clean Trucks w/Alt. Fuel	51404	10%



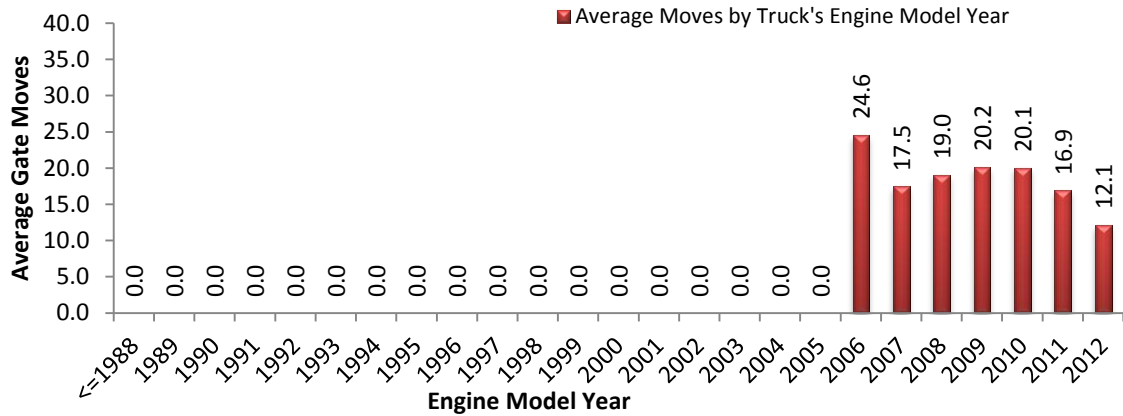
Truck Fuel Type Summary				
Fuel Type	Trucks	Percent Trucks	Moves	Percent Moves
Diesel	9305	91.34%	144316	88.87%
LNG	872	8.56%	18033	11.10%
CNG	5	0.05%	10	0.01%
Electric Hybrid	1	0.01%	17	0.01%
Other and Blanks	4	0.04%	21	0.01%
<b>Total</b>	<b>10187</b>	-	<b>162397</b>	-



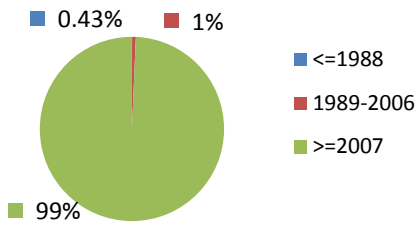
Engine Model Year of Trucks and Gate Moves										
Engine Model Year	Trucks <sup>4</sup>	Percent Trucks		Moves <sup>5</sup>	Percent Moves		Moves per Truck <sup>6</sup>	Active Trucks <sup>7</sup>		
<=1988	<=1988	3	0.03%	0.03%	0	0.00%	0.00%	0.0	0	0
1989-2006	1989	0	0.00%	0.65%	0	0.00%	0.24%	0.0	0	16
	1990	2	0.02%		0	0.00%		0.0	0	
	1991	0	0.00%		0	0.00%		0.0	0	
	1992	0	0.00%		0	0.00%		0.0	0	
	1993	1	0.01%		0	0.00%		0.0	0	
	1994	2	0.02%		0	0.00%		0.0	0	
	1995	2	0.02%		0	0.00%		0.0	0	
	1996	0	0.00%		0	0.00%		0.0	0	
	1997	2	0.02%		0	0.00%		0.0	0	
	1998	6	0.06%		0	0.00%		0.0	0	
	1999	4	0.04%		0	0.00%		0.0	0	
	2000	9	0.09%		0	0.00%		0.0	0	
	2001	3	0.03%		0	0.00%		0.0	0	
	2002	5	0.05%		0	0.00%		0.0	0	
	2003	2	0.02%		0	0.00%		0.0	0	
	2004	5	0.05%		0	0.00%		0.0	0	
2005	3	0.03%	0	0.00%	0.0	0				
2006	20	0.20%	393	0.24%	24.6	16				
>=2007	2007	1908	18.73%	99.32%	28612	17.62%	99.76%	17.5	1638	8459
	2008	2640	25.92%		42001	25.86%		19.0	2205	
	2009	4270	41.92%		73344	45.16%		20.2	3639	
	2010	745	7.31%		11853	7.30%		20.1	591	
	2011	460	4.52%		5369	3.31%		16.9	318	
	2012	95	0.93%		825	0.51%		12.1	68	
Typos/Blanks		0	0.00%	0.00%	0	0.00%	0.00%	0.0	0	0
Total		10187	100.00%		162397	100.00%		-	8475	



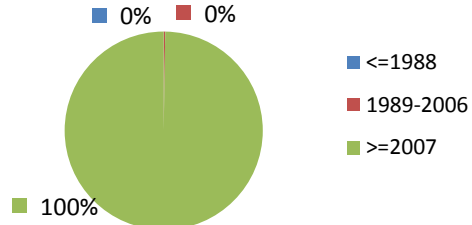
### Average Gate Moves Done in Month by Truck's Engine Model Year



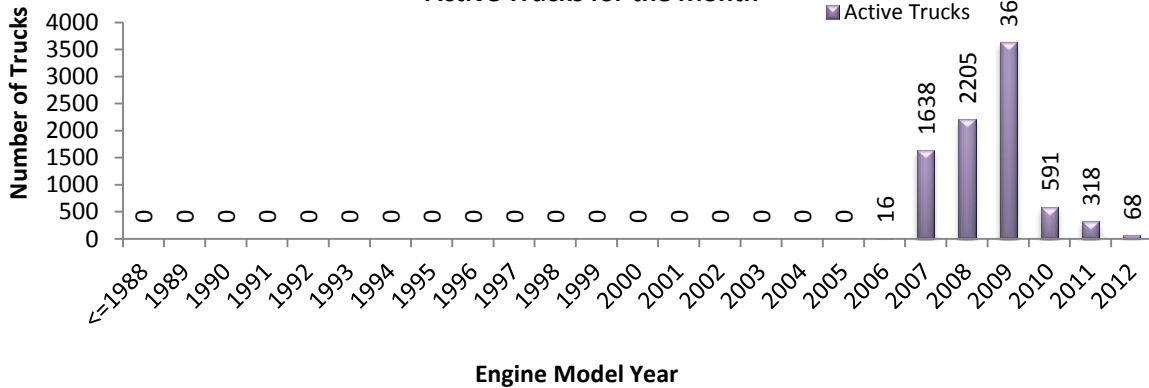
### PDTR's Truck Distribution by Engine Model Year



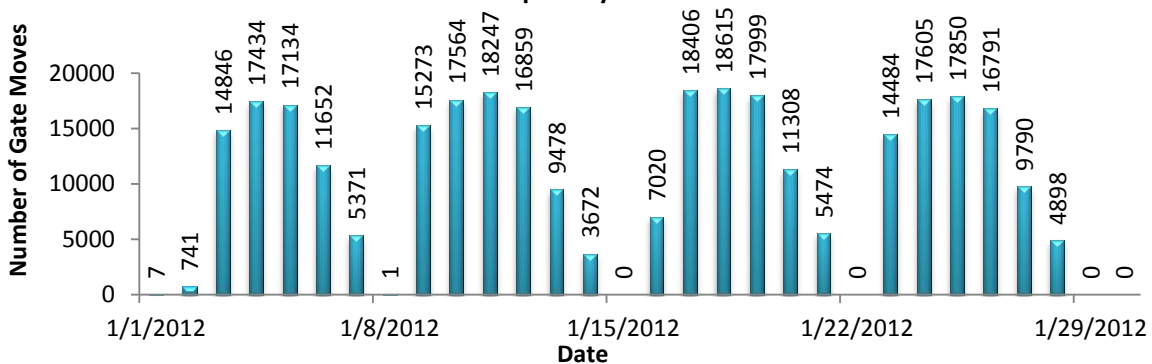
### Distribution of Gate Moves by Engine Model Year



### Active Trucks for the Month



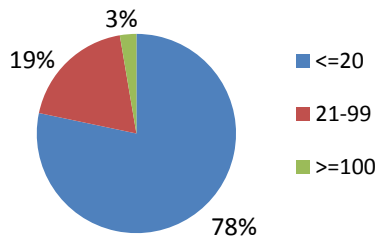
### Gate Moves per Day of the Month



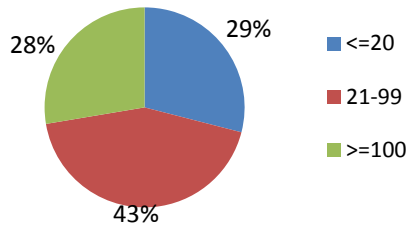
### Total Gate Moves by Fleet Size

Fleet Size	LMCs	Total Fleet Size <sup>8</sup>	Total Moves	Avg. Number of Moves per Fleet Size <sup>9</sup>	Avg. Number of Trucks per LMC <sup>10</sup>
<=20	469	2873	48131	16.75	6.13
21-99	114	4294	71365	16.62	37.67
>=100	16	2738	42901	15.67	171.13
Total	599	9905	162397	16.40	16.54

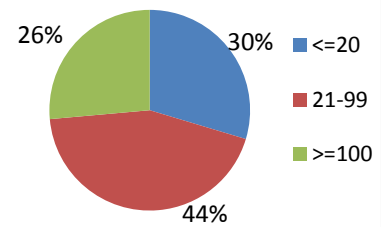
**Distribution of LMC's Truck Fleet Size**



**Fleet Size Distribution**



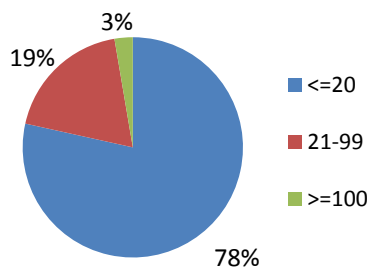
**Total Moves per Truck Fleet Size**



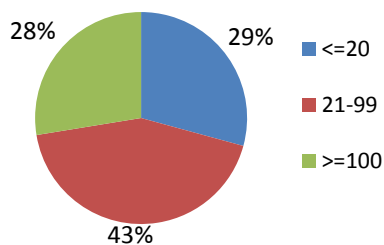
### Gate Moves by Clean Truck Fleet Size

Clean Truck Fleet Size	LMCs	Total Clean Truck Fleet Size <sup>11</sup>	Total Moves by Clean Trucks	Avg. Number of "Clean Moves" per Clean Truck Fleet Size <sup>12</sup>	Avg. Number of Clean Trucks per LMC <sup>13</sup>
<=20	470	2886	48387	16.77	6.14
21-99	113	4263	71103	16.68	37.73
>=100	16	2721	42514	15.62	170.06
Total	599	9870	162004	16.41	16.48

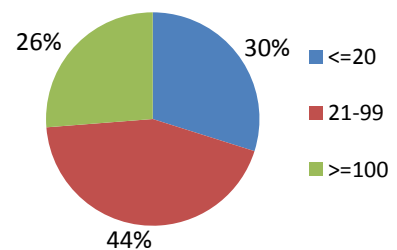
**Distribution of LMC's Clean Truck Fleet Size**



**Clean Truck Fleet Size Distribution**



**Total Clean Trucks Moves per Clean Truck Fleet Size**



Footnotes:	
<b>1. Total Adjusted Uniquely Matched:</b>	Amount of Adjusted Not Exempt moves crosschecked with PDTR RFID# and PortCheck RFID#.
<b>2. % Moves Uniquely Matched:</b>	The quotient of <i>Adjusted Uniquely Matched</i> by Adjusted Not Exempt Moves x100%.
<b>3. Total LMCs that made Clean Moves Only:</b>	The difference of the # of LMCs that made a move and the # of LMCs who made a move with Non-Clean Trucks.
<b>4. Trucks:</b>	Breakdown of trucks in the PDTR by Engine Model Year(EY).
<b>5. Moves:</b>	Breakdown of the current month's gate movement by a truck's Engine Model Year.
<b>6. Moves per Truck:</b>	The average number of moves made during the month distributed by the EY of all registered trucks in the PDTR.
<b>7. Active Trucks</b>	Distribution of trucks by EY that actually made moves during the current month.
<b>8. Total Fleet Size:</b>	Categorized LMCs by the size of their truck fleet, regardless of EY, and summed the fleet sizes for each category.
<b>9. Average Number of Moves per Fleet Size:</b>	The quotient of the total <i>Moves</i> divided by the <i>Total Fleet Size</i> for each fleet size category.
<b>10. Average Number of Trucks per LMC:</b>	The quotient of the <i>Total Fleet Size</i> divided by the number of LMCs for each fleet size category.
<b>11. Total Clean Truck Fleet Size:</b>	Categorized LMCs by their clean truck fleet size, only EY $\geq$ 2007, and summed the fleet sizes for each category.
<b>12. Average Number of "Clean Moves" per Clean Truck Fleet Size:</b>	The quotient of the total clean moves divided by the <i>Total Clean Truck Fleet Size</i> for each fleet size category.
<b>13. Average Number of Clean Trucks per LMC:</b>	The quotient of total "clean moves" divided by the <i>Total Clean Truck Fleet Size</i> for each fleet size category.