



June 18, 2015



VIDEO: LOS ANGELES PORT POLICE CARRY SPECIAL OLYMPIC 'FLAME OF HOPE' ALONG LA WATERFRONT



Los Angeles Port Police Officers participated in the traditional Law Enforcement Torch Run® for Special Olympics, receiving the torch from the Los Angeles Police Department at Fire Station 112 on Harbor Boulevard and handing it off by boat to the Long Beach Police Department. This running event was established in 1981 and is part of an international fundraising effort which provides vital funding to the Special Olympic games. The opening ceremonies for the 2015 Special Olympics will take place at the Los Angeles Coliseum on July 25, 2015.

[WATCH VIDEO](#)

PORTS OF LOS ANGELES, AUCKLAND AND GUANGZHOU ESTABLISH TRIPARTITE PORTS ALLIANCE



Ambassador Vilma Martinez, left, President of the L.A. Harbor Commission, signs agreement along with Yuan Huahui, center, Deputy Director-General of the Guangzhou Port Authority, and Sanchia Jacobs, Manager Global Partnerships & Strategy, Auckland Council.

The Port of Los Angeles has signed a memorandum of understanding with the Ports of Auckland, New Zealand, and Guangzhou, China, at a Tripartite Ports Summit sponsored by Los Angeles Mayor Eric Garcetti and the City of Los Angeles. The document establishes the Tripartite Ports Alliance, which represents a new level of cooperation between the three port authorities that had initially committed to working more closely together in November 2014.

[READ MORE](#)

**VIDEO: SCOUT DAY
AT THE PORT OF LA**

On Saturday, June 13th, the Port of Los Angeles welcomed 80 Girl and Boy Scouts to Banning's Landing in Wilmington. Scouts learned about ports, the maritime environment, goods movement and about future career possibilities. The group visited the Port of Los Angeles TransPORTer mobile exhibit and enjoyed a harbor boat tour. Scouts went home with a Scouting at the Port of Los Angeles Patch.



Scouting at the Port of Los Angeles provides this experience to troops that visit two of the following participating facilities: Battleship IOWA, Maritime Museum, Banning Residence Museum, Drum Barracks, Cabrillo Aquarium, SS Lane Victory, Marine Mammal Care Center and Los Angeles Maritime Institute Tall Ships. Scouts also complete a short Port of Los Angeles quiz. See [Scout Program](#) for details on how your scout troop can participate next year.

[WATCH VIDEO](#)

**WILMINGTON WATERFRONT PARK AMONG
'COOLEST URBAN SPACES IN AMERICA'**



[Thrillist has selected](#) Wilmington Waterfront Park as one of the 14 coolest urban spaces in America. The Wilmington Waterfront Park, a 30-acre buffer area between "C" Street and Harry Bridges Boulevard, was designed to provide public open space between Port operations and adjacent residences in Wilmington. After a series of public planning workshops, a plan to take a sustainable, strategic approach to the area was approved and the Port of Los Angeles with design consultant team Sasaki Associates moved forward with a community-supported plan that offered never-seen-before views of the LA Waterfront. Wilmington Waterfront Park officially opened to the public in June 2011.

[READ MORE](#)

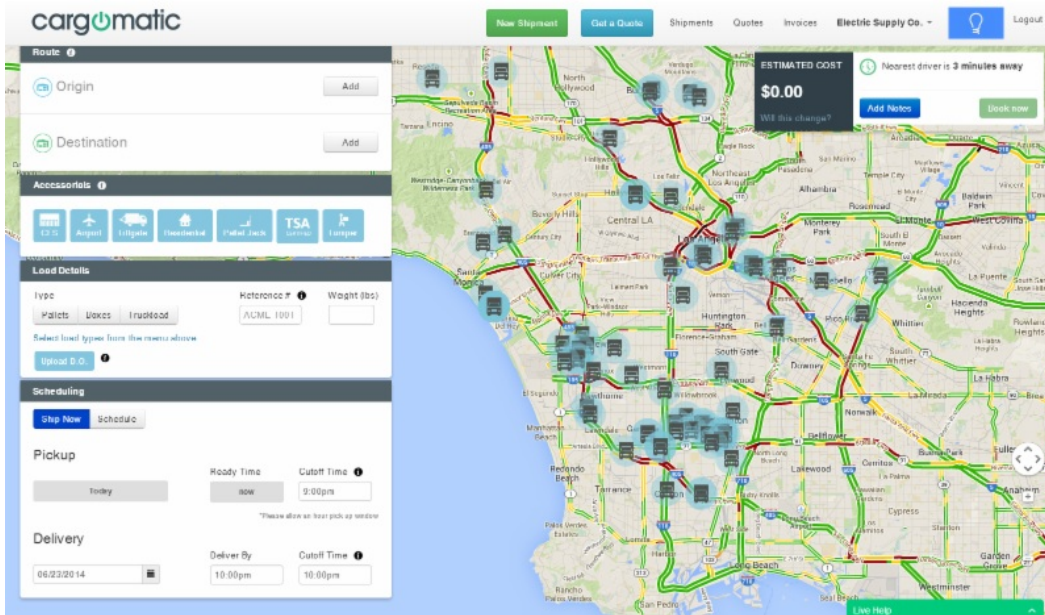
FEAST TURNS SEAFOOD INTO SCHOLARSHIPS



Nearly 800 people participated in the 28th Annual Seafood Feast and Memorial Scholarship Fundraising event hosted by the Propeller Club of Los Angeles-Long Beach, Port of Los Angeles, Port of Long Beach and International Longshore and Warehouse Union on June 10 at Ports O' Call Village in San Pedro. The Seafood Feast and Memorial Scholarship Fund was established in 1987 to honor the memory of longshore workers who have lost their lives working on the waterfront. Funds raised at the event are awarded to local high school seniors entering college in the fall. Since its inception, more than \$200,000 in scholarships have been awarded.

[READ MORE](#)

PORT OF LOS ANGELES EMBRACES TECHNOLOGY TO INCREASE SUPPLY CHAIN EFFICIENCY



Mayor Garcetti has announced that Cargomatic, a Los Angeles-based, privately-owned technology company that matches trucking capacity with shipments, is testing its mobile app to speed up the flow of containerized cargo at the Port of Los Angeles (POLA), the number 1 port in America. This is an important tool in increasing supply chain efficiency at the POLA.

[READ MORE](#)

TERMINAL ISLAND HISTORY FOCUS OF NEW BOOK

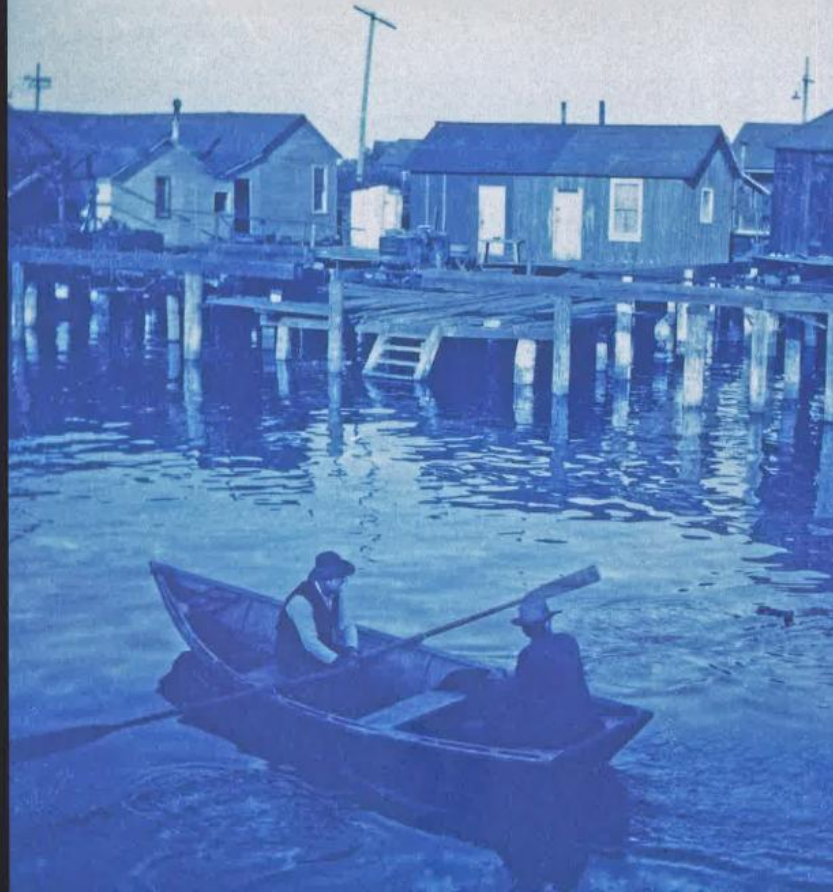
ターミナル

TERMINAL ISLAND Lost Communities of Los Angeles Harbor

Naomi
Hirahara

Geraldine
Knatz

Foreword by
William Deverell



"Terminal Island: Lost Communities of Los Angeles Harbor," a historical account of the denizens of Terminal Island, has been released by the Port of Los Angeles and Angel City Press. With more than 230 images in color and black-and-white, the historical text outlines the spirit of a place that few Angelenos have visited - a sheltered spot in the Pacific Ocean that once served as a resort for wealthy, then a refuge for artists, and lastly a thriving community of Japanese fisherman and their families. The book's inscription sets the tone for the historical read, aptly stated, "To the people of the lost communities: you are not forgotten."

[READ MORE](#)

UPCOMING EVENTS AT THE PORT OF LA

[Event: Concerts on the LA Waterfront](#)

Date: Sat. June 20, 6pm to 9:30pm

Location:

**Banning's Landing Community Center,
100 E. Water Street
Wilmington, CA 90744**

[Click here for event flier](#)



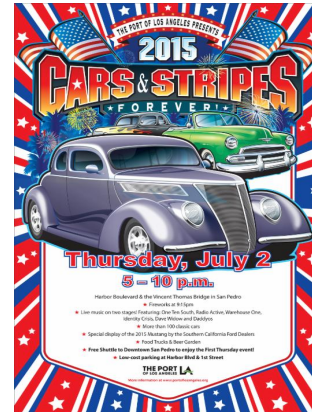
Event: 2015 Cars & Stripes Forever

Date: Thur. July 2, 5pm to 10pm

Location:

**Harbor Boulevard & The Vincent Thomas
Bridge in San Pedro**

[Click here for event flier](#)



[CLICK HERE TO VIEW ALL EVENTS](#)

[Forward to a Friend](#)

[Join My Mailing List](#)

