



# Cruise Terminal Improvements

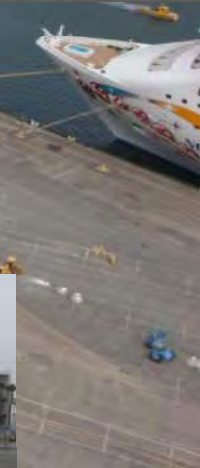
Los Angeles  
Board of Harbor Commissioners  
Board Meeting

September 17, 2009





## Existing World Cruise Terminal





## Existing World Cruise Terminal B.93AB



Existing Partial South Elevation



Existing Partial North Elevation

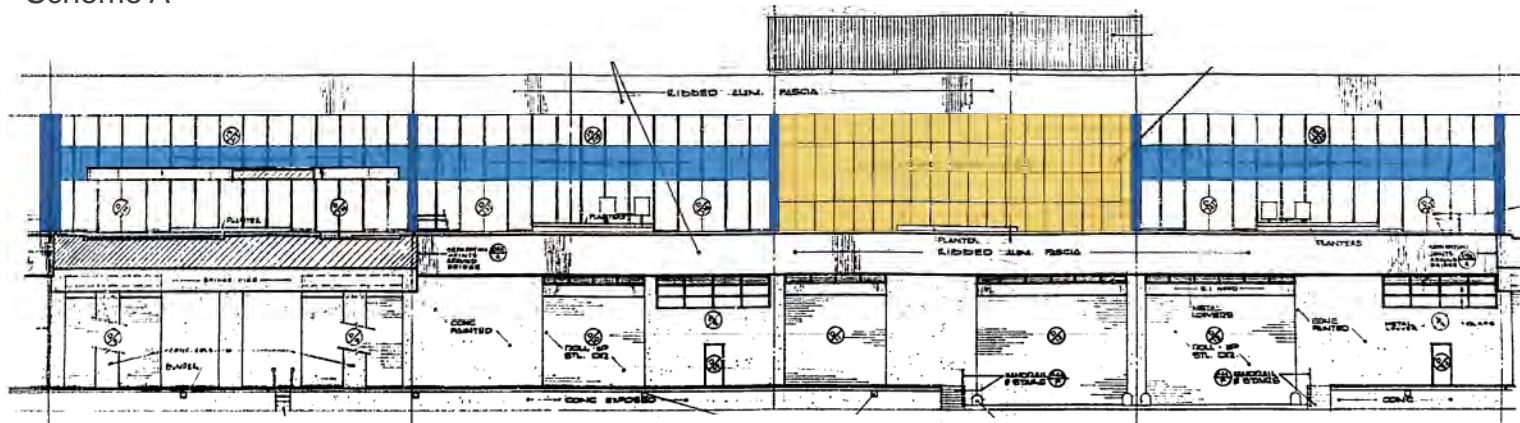


# World Cruise Terminal Proposed Paint Schemes

Scheme A  
(original 1960's colors)



Scheme A









## Scheme D





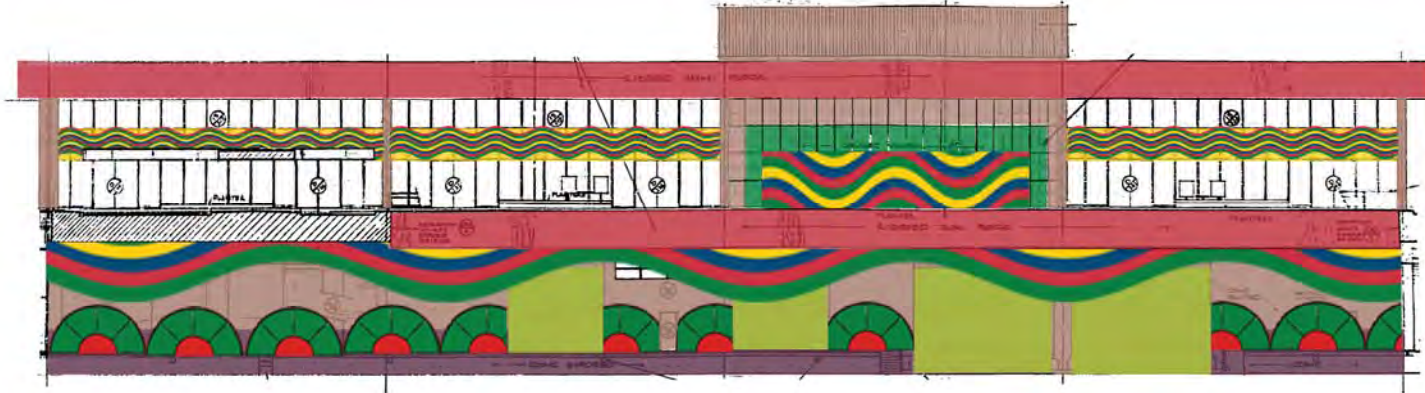


## Scheme E









Scheme G





## Cruise Terminal Improvements: \$42,200,000

- AMP (11kV) - \$15,000,000 (in construction)
- AMP (6.6kV) - \$3,000,000 (in design)
- Gangways - \$9,400,000 (in fabrication)
- Solar Panels - \$10,800,000 (in construction)
- Fendering System - \$1,500,000 (in design)
- Audio/Video, Lighting, Painting - \$2,500,000 (in design)



**Thank you**

